

FILE O:\Per\SFHW\00005\W\PLANS\TITLE\TITLE SHEET.dwg
 DATE 10/9/2017 8:39 LAYOUT 1
 DESIGNED DO
 CHECKED STAFF
 DRAFTED DO

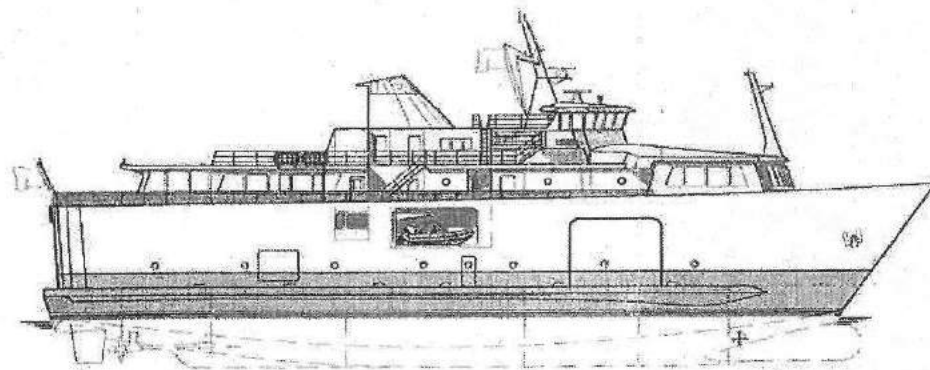
STATE OF ALASKA

DEPARTMENT OF TRANSPORTATION & PUBLIC FACILITIES

CLARK BAY FERRY TERMINAL & SEAPLANE FLOAT EXPANDED PARKING

EMBANKMENT, RIPRAP, GRADING, PAVING, SIGNING, STRIPING, POWER & LIGHTING, CONCRETE, GUARDRAIL, FENCING

As Advertised:
October 30, 2017



NO.	DATE	REVISION	STATE	PROJECT DESIGNATION	YEAR	SHEET NO.	TOTAL SHEETS
			ALASKA	SFHWW00005/0003195	2017	1	17

SHEET INDEX	
SHEET NO.	DESCRIPTION
1	TITLE SHEET
2	ESTIMATE OF QUANTITIES AND GENERAL NOTES
3	SURVEY CONTROL SHEET
4	EXISTING SITE PLAN
5	NEW SITE PLAN
6	PARKING LOT LAYOUT PLAN
7	APRON REGRADING PLAN & SLOTTED DRAIN 2 PROFILE
8	TYPICAL SECTIONS
9	SUMMARY TABLES
10	SNOW GATE
11	NEW BRIDGE APRON & TRANSITION PLATE
12	SLOTTED DRAIN 1 PROFILE
13	STRIPING & SIGNING PLAN
14	SPECIAL SIGNS & MISC. DETAILS
15	EROSION & SEDIMENT CONTROL PLAN
16	UPLANDS LIGHTING PLAN
17	UPLANDS LIGHTING DETAILS

TIDAL DATA	
HTL	+19.8'
MHW	+15.6'
MLLW	0.0'
ELW	-4.6'

THE FOLLOWING STANDARD DRAWINGS APPLY TO THIS PROJECT:

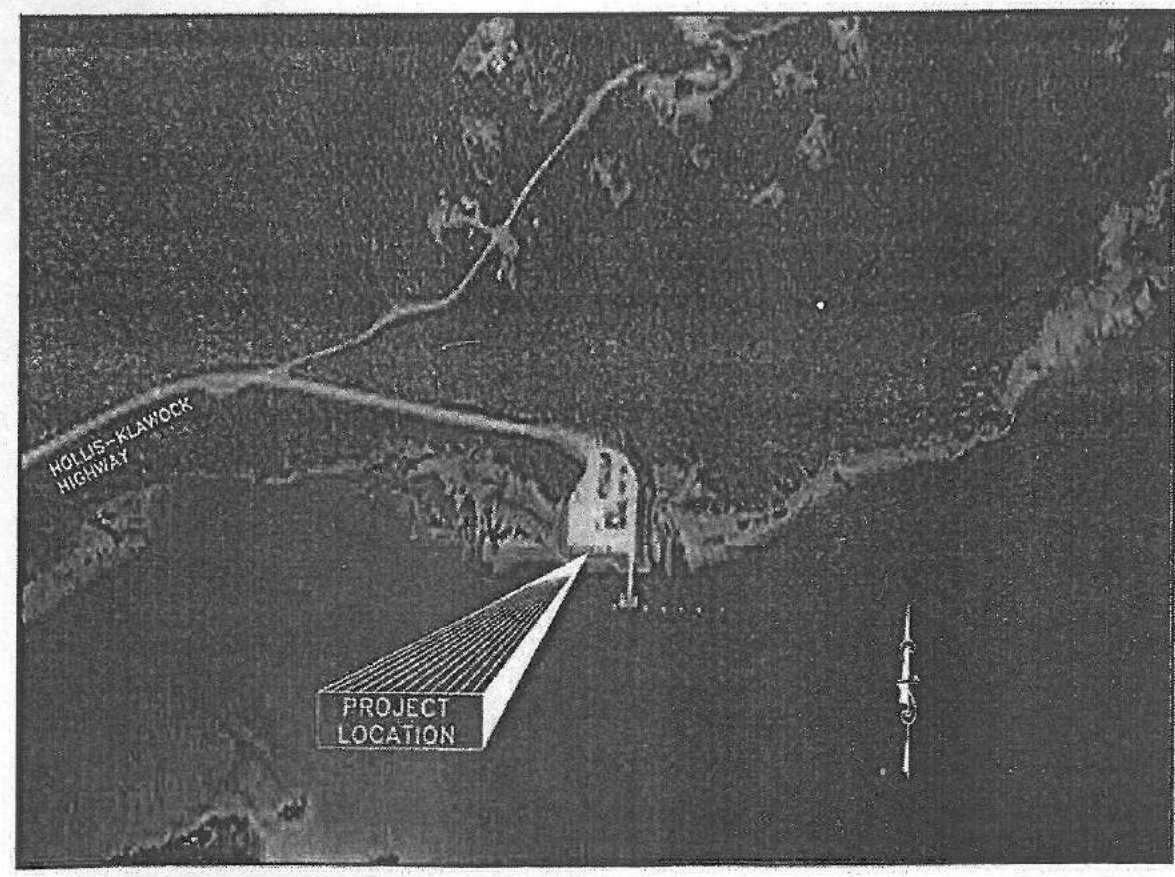
D-01.02	D-24.00	D-26.03	F-01.03
F-03.02	G-00.03	G-04.10W	G-10.01
I-20.20	I-30.10	L-23.01	S-00.11
S-01.01	S-05.01	S-20.10	S-30.04
T-22.03			

USE THESE PLANS IN CONJUNCTION WITH THE STATE OF ALASKA STANDARD SPECIFICATIONS FOR HIGHWAY CONSTRUCTION, 2017 EDITION AND THE PROJECT SPECIAL PROVISIONS.

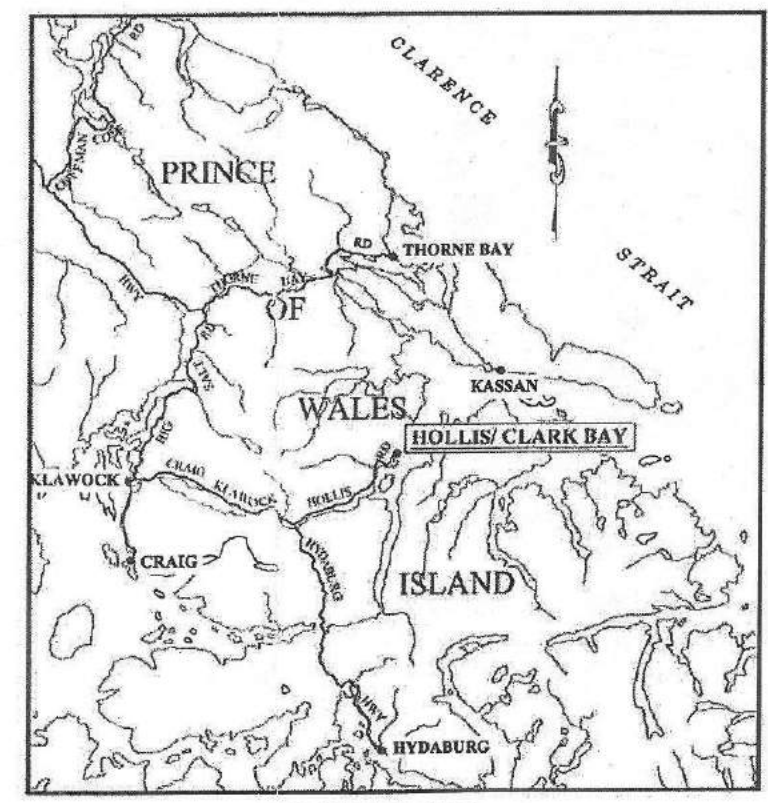
STATE OF ALASKA
 DEPARTMENT OF TRANSPORTATION & PUBLIC FACILITIES
 6860 GLACIER HIGHWAY, JUNEAU, AK 99801
 (907) 465-1763

APPROVED: *[Signature]* 10/26/17
 REGIONAL PRECONSTRUCTION ENGINEER DATE
 L. PAT CARROLL, P.E.

CONCUR: *[Signature]* 26 Oct 2017
 REGIONAL DIRECTOR DATE
 D. LANCE MEARIG, P.E.



SITE MAP



VICINITY MAP

FILE Q:\Pow\SFH\00005\WF\PLANSET\FINAL\02 - ESTIMATE.dwg
 DATE 10/10/2017 1:48:15 PM LAYOUT 2 DESIGNED JDO CHECKED STAFF DRAFTED JDO

NO.	DATE	REVISION	STATE	PROJECT DESIGNATION	YEAR	SHEET NO.	TOTAL SHEETS
			ALASKA	SFH\00005\0003195	2017	2	17

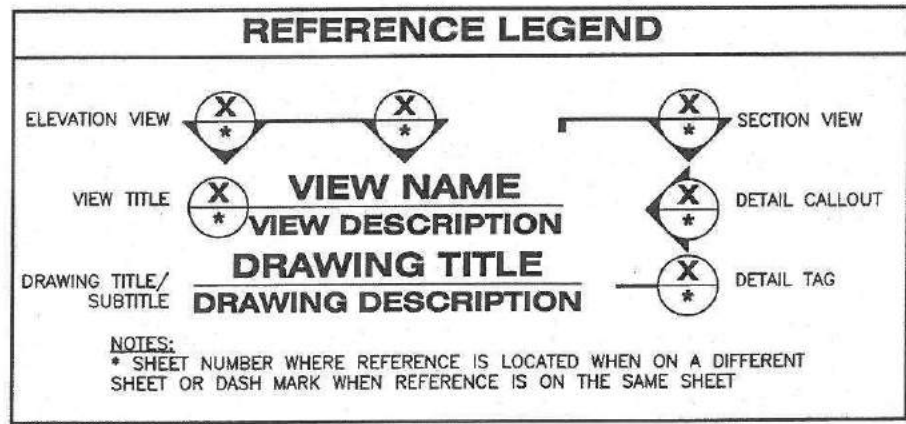
ESTIMATE OF QUANTITIES			
ITEM #	ITEM DESCRIPTION	PAY UNIT	QTY.
201 (3B)	CLEARING AND GRUBBING	LUMP SUM	ALL REQUIRED
201 (7)	INVASIVE PLANT SPECIES CONTROL, REMOVAL, AND DISPOSAL	SQUARE YARD	50
202 (1)	REMOVAL OF STRUCTURES AND OBSTRUCTIONS	LUMP SUM	ALL REQUIRED
203 (3)	UNCLASSIFIED EXCAVATION	CUBIC YARD	225
203 (5A)	BORROW, TYPE A	TON	4,100
203 (5C)	BORROW, TYPE C	TON	9500
203 (19)	REGRADE EXISTING UPLANDS	LUMP SUM	ALL REQUIRED
301 (1)	AGGREGATE BASE COURSE, GRADING D-1	TON	1,425
401 (1)	ASPHALT CONCRETE, TYPE II; CLASS B	TON	830
401 (2)	ASPHALT CEMENT, GRADE PG 58-28	TON	51
401 (15)	ASPHALT MATERIAL PRICE ADJUSTMENT	CONTINGENT SUM	ALL REQUIRED
404(3)	CSS-1H ASPHALT FOR FOG SEAL	TON	3
501 (1)	CONCRETE BRIDGE APRON	LUMP SUM	ALL REQUIRED
504 (1)	BRIDGE TRANSITION PLATE	EACH	1
504 (2)	SNOW GATE	EACH	2
603 (1-18)	18 INCH CSP	LINEAR FOOT	82
603 (22)	SLOTTED DRAIN	LINEAR FOOT	337
604 (5A)	INLET, TYPE A	EACH	3
604 (5I)	INLET, TYPE 1	EACH	2
606 (1)	W-BEAM GUARDRAIL	LINEAR FOOT	341
606 (6)	REMOVING AND DISPOSING OF GUARDRAIL	LINEAR FOOT	67
607 (4)	RECONSTRUCTED FENCING AND GATES	LINEAR FOOT	154
609 (2)	CURB AND GUTTER, TYPE 1	LINEAR FOOT	61
611 (1)	RIPRAP, CLASS IV	CUBIC YARD	2,010
615 (7)	STANDARD SIGNS	LUMP SUM	ALL REQUIRED
627 (1)	WATER SERVICE MODIFICATION	LUMP SUM	ALL REQUIRED
640 (1)	MOBILIZATION & DEMOBILIZATION	LUMP SUM	ALL REQUIRED
640 (4)	WORKER MEALS AND LODGING, OR PER DIEM	LUMP SUM	ALL REQUIRED
641 (1)	EROSION, SEDIMENT AND POLLUTION CONTROL ADMINISTRATION	LUMP SUM	ALL REQUIRED
641 (3)	TEMPORARY EROSION, SEDIMENT AND POLLUTION CONTROL	LUMP SUM	ALL REQUIRED
641 (5)	TEMPORARY EROSION SEDIMENT AND POLLUTION CONTROL BY DIRECTIVE	CONTINGENT SUM	ALL REQUIRED
641 (6)	WITHHOLDING	CONTINGENT SUM	ALL REQUIRED
642 (1)	CONSTRUCTION SURVEYING	LUMP SUM	ALL REQUIRED
642 (9)	REFERENCE EXISTING MONUMENT	EACH	10
643 (2)	TRAFFIC MAINTENANCE	LUMP SUM	ALL REQUIRED
644 (1)	FIELD OFFICE	LUMP SUM	ALL REQUIRED
644 (6)	VEHICLES	LUMP SUM	ALL REQUIRED
644 (15)	NUCLEAR TESTING EQUIPMENT STORAGE SHED	EACH	ALL REQUIRED
662 (1)	ELECTRICAL SYSTEM	LUMP SUM	ALL REQUIRED
670 (1)	PAINTED TRAFFIC MARKINGS	LUMP SUM	ALL REQUIRED

UPDATED: 8/18/17

ESTIMATE OF QUANTITIES				
ITEM #	ITEM DESCRIPTION	UNIT	QTY.	FACTOR
201 (3B)	CLEARING AND GRUBBING	SQUARE YARD	5,453	
401 (1)	ASPHALT CONCRETE, TYPE II; CLASS B			117 LBS / S.Y. / INCH
401 (2)	ASPHALT CEMENT, GRADE PG 58-28			6% OF ITEM 401(1)
404(3)	CSS-1H ASPHALT FOR FOG SEAL			0.1 GAL. / S.Y.
	AREA OF EXISTING PARKING AREA TO COVER WITH FOG SEAL	SQUARE YARD	4,661	

ABBREVIATIONS			
CL	CENTER LINE	LBS	POUNDS
CYVM	CUBIC YARD VEHICLE MEASURE	LF	LINEAR FEET
BLDG	BUILDING	LT	LEFT
CB	CATCH BASIN OR CIRCUIT BREAKER	MAX	MAXIMUM
CPP	CORRUGATED POLYETHYLENE PIPE	MH	MOUNTING HEIGHT ABOVE GROUND LEVEL
CU	COPPER CONDUCTOR	MIN	MINIMUM
CW	COPPER CLAD STEEL GROUND ROD	MLLW	MEAN LOWER LOW WATER
CY	CUBIC YARD	N	NORTHING
DIA	DIAMETER	NTS	NOT TO SCALE
DWG	DRAWING	OC	ON CENTER
E	EASTING	PVC	POLYVINYL CHLORIDE
ELEV	ELEVATION	R	RADIUS
Δ	DELTA	RMC	RIGID METAL CONDUIT
GAL	GALLON	RT	RIGHT
GR	GROUND WIRE	SHT	SHEET
HTL	HIGH TIDE LINE	SY	SQUARE YARD
L	LENGTH	TEL	TELEPHONE
		TYP	TYPICAL

GENERAL NOTES	
1.	IFA FERRY SERVICE SCHEDULE, LOADING AND UNLOADING OPERATIONS SHALL BE UNINTERRUPTED BY CONSTRUCTION WORK.
2.	TYPICAL SECTIONS AND TRANSITIONS MAY BE MODIFIED BY THE ENGINEER WHERE REQUIRED TO ACCOMMODATE EXISTING FIELD CONDITIONS.
3.	REFERENCE APPENDIX B AND SECTION 641 OF THE SPECIFICATIONS FOR ALL PERTINENT ENVIRONMENTAL WORK RESTRICTIONS.



CONSTRUCTION CONSIDERATIONS	
1.	THE CONTRACTOR SHALL PREPARE A CONSTRUCTION PHASING PLAN, PER SECTION 643, SHOWING THE INTENDED SEQUENCE OF ALL WORK. STAGE/SCHEDULE THE PROJECT SUCH THAT VEHICLE PARKING (20 VEHICLE SPACES) AND STAGING AREAS (10 VEHICLE SPACES), EITHER EXISTING, PERMANENT OR TEMPORARY ARE PROVIDED AT ALL TIMES.
2.	THE CONTRACTOR MAY STAGE EQUIPMENT ON ANY PART OF STATE OF ALASKA PROPERTY SO LONG AS IT DOES NOT IMPACT STAGING AND PARKING AREAS (SEE NOTE 1).
3.	IF CONSTRUCTION WORK ON THE PROJECT REQUIRES INTERRUPTION OF ELECTRICAL POWER TO THE BRIDGE AND RAMP, COORDINATE DISCONNECTION WITH THE ENGINEER.



STATE OF ALASKA DEPARTMENT OF TRANSPORTATION
 AND PUBLIC FACILITIES
 6860 GLACIER HIGHWAY, JUNEAU, AK 99801
 (907) 465-1763
**POW CLARK BAY FERRY TERMINAL &
 SEAPLANE FLOAT EXPANDED PARKING**

ESTIMATE OF QUANTITIES
 AND GENERAL NOTES

10/10/17

PRINCE OF WALES ISLAND

NO.	DATE	REVISION	STATE	PROJECT DESIGNATION	YEAR	SHEET NO.	TOTAL SHEETS
			ALASKA	SFHWHY00005/0003195	2017	3	17

FILE: G:\P\on\SFHWY\SWA\30\BASE\MAPS\ClarkeBay_2016_A2_Rev2.dwg
 DATE: 8/16/21
 3:16 AM LAYOUT A2
 DESIGNED: JPO
 CHECKED: BHT
 ED: JPH/DH

HORIZONTAL CONTROL

The basis of horizontal control is #509, a 3.25" Aluminum Monument Marking Meander Corner 5 of ASLS 2007-55. Coordinates Were Established at #509 by a series of OPUS Sessions in December 2009. Observed OPLUS Position:

NAD83 (CORS96) (Epoch 2003.0000)
 Latitude : 55°29'28.53954"N
 Longitude : 132°37'25.89244"W

The Basis of Bearing for This Project is the Bearing of N80°45'07"W From DOT set Control Points 20 to 21.

#20-Set 2.5" Alcap on 5/8" Rebar Sub Graded 0.20'
 2.92' From EP and 5.90' From Directional Arrow Sign.

#21-Set 2.5" Alcap on 5/8" Rebar Sub Graded 0.10'
 3' From EP and N80W 83'+/- From End of Road Sign.

#22-Set 2.5" Alcap on 5/8" Rebar Sub Graded 0.35'
 2.5' From EP

The Clarke Bay ASLS 2007-55 Grid is a local ground coordinate system based at #509. The Grid system relates to AKSPC Zone 1 NAD83(CORS96) through the following parameters:

Zone = NAD83 AKSPC ZONE 1
 Grid Scale = 0.9999279
 Convergence = 0°52'25"
 Translation about 509 as follows:
 AKSPC Northing = 1337342.86 FT US
 AKSPC Easting = 2902216.17 FT US
 Local Northing = 200128.82 FT US
 Local Easting = 599705.80 FT US

VERTICAL CONTROL

The basis of vertical control is the USC&GS benchmark # 1X with a 2003 published elevation of 17.41' above MLLW (Tidal Epoch 1983-2001). This is NOS Tidal Series 9450544.
<http://tidesandcurrents.noaa.gov/benchmarks/9450544.html>

The project specific basis of vertical control is DOT point 20 with an observed elevation of 28.61' above MLLW.

MONUMENT NOTES:

1. If any pair of control points disagrees from published value by more than 1:10,000 horizontally or vertically then a third network point must be tied to ascertain which point is in error or has been disturbed.
2. Whether listed or not, all monuments, property markers, or accessories that will be disturbed or buried shall be referenced prior to being disturbed, and re-established in their original position and a record of monument form in accordance with A.S.34.65.040 shall be submitted to the construction engineer for review prior to recording. Coordinate values listed are for informational purposes and should be used to reset monuments only as a last resort.

Existing Property Monuments To Be Referenced and Reset (Fall in new asphalt)

Point #	Northing	Easting	Description
523	200289.39	599708.76	ALPRIM3.25" DNR ASLS79-181_PC
525	200228.00	599820.42	ALPRIM3.25" DNR ASLS 79-181_PT
526	200229.01	599818.60	ROW_POST_CONC
527	200167.65	599773.95	ALPRIM_3.25" WC_C4_ASLS83-43
528	200089.63	599773.20	ALPRIME2" TRA-MC4-MC1-ATS1675_ASLS88-43
529	200009.66	599772.51	ALPRIME2" WC-C2-TRB-ATS1675_WC-C3ATS1041
530	200164.80	599740.54	ALPRIM3.25" WCMC5_ATS1675

MONUMENTS IN THIS TABLE WILL BE DESTROYED BY NEW CONSTRUCTION THEREFORE WILL NEED TO BE REFERENCED AND REPLACED IN THEIR ORIGINAL HORIZONTAL POSITION AND CORNER RECORD FORM SUBMITTED TO DOT FOR REVIEW BEFORE RECORDING.

Existing Property Monuments (Needing Reset if Destroyed)

Point #	Northing	Easting	Description
509	200128.82	599705.80	ALPRIM3.25" ASLS2007-55/MC5_ATS1675
524	200301.99	599626.76	ALPRIM3.25" C6_ASLS2007-55/SEC34/ROW
531	200235.57	599586.45	ALPRIM3.25" ASLS_2007-55_MCS/SEC34

ALL PROPERTY MONUMENTS IN THE EXISTING PROPERTY TABLE SHALL BE PRESERVED OR REFERENCED PRIOR TO DISTURBANCE AND REPLACED AT THEIR ORIGINAL HORIZONTAL POSITION. A MONUMENT RECORD FORM SHALL BE COMPLETED BY AN ALASKA PROFESSIONAL LAND SURVEYOR AND SUBMITTED TO DOT FOR REVIEW PRIOR TO RECORDING.

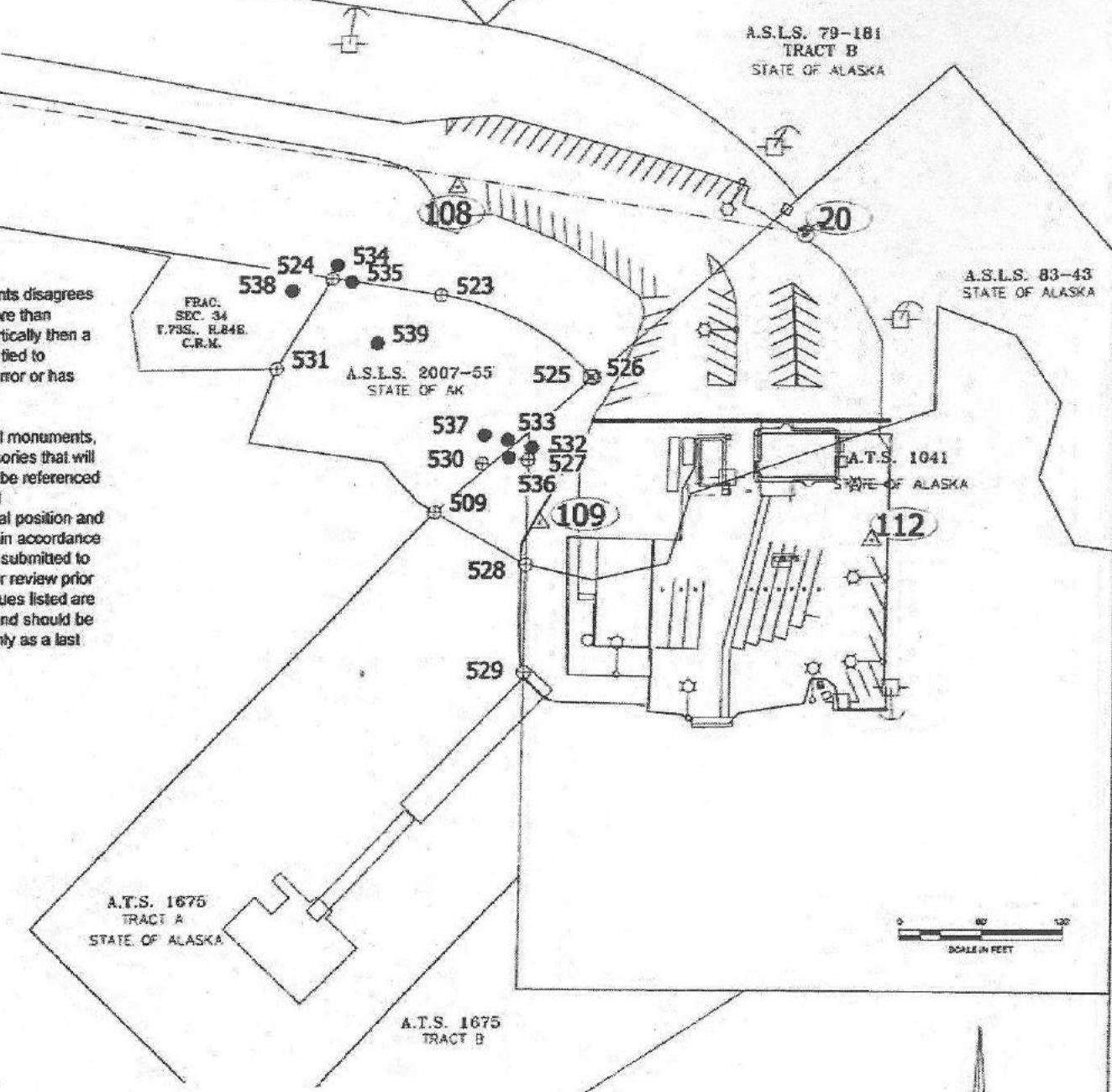
Survey Control Point Table NAD83(96) AKSPCS Z1

Point #	Northing	Easting	Elevation	Description
20	1337552.44	2902483.60	28.61	2.5"ALCAP_SET
21	1337728.28	2901289.11	73.42	2.5"ALCAP_SET
22	1337640.44	2900879.21	78.77	2.5"ALCAP_SET
108	1337582.99	2902226.99	31.13	PK/WASH
109	1337336.24	2902293.64	24.85	PK/WASH
112	1337326.65	2902539.17	25.81	MAG/WASH

Survey Control Point Table (Local)

Point #	Northing	Easting	Elevation	Description
20	200334.32	599976.41	28.61	2.5"ALCAP_SET
21	200528.36	598784.65	73.42	2.5"ALCAP_SET
22	200446.77	598373.43	78.77	2.5"ALCAP_SET
108	200368.77	599720.28	31.13	PK/WASH
109	200121.02	598783.16	24.85	PK/WASH
112	200107.69	600028.53	25.81	MAG/WASH

ALL MONUMENTS IN THE SURVEY CONTROL TABLE ARE PROVIDED STRICTLY FOR SURVEY CONTROL. SHOULD ANY OF THEM BE DESTROYED DURING CONSTRUCTION THEY SHALL NOT BE REPLACED. HOWEVER, THE CONTRACTOR IS RESPONSIBLE FOR ESTABLISHING ADDITIONAL CONTROL AS NEEDED.



Existing Bearing Trees That May Need To Be Removed

Point #	Northing	Easting	Description
532	200176.59	599776.86	BT_11"SPRUCE
533	200182.36	599759.24	BT_8"SPRUCE
534	200311.70	599630.48	BT_13"HEMLOCK
535	200299.42	599641.33	BT_12"SPRUCE
536	200169.02	599760.40	BT_12"SPRUCE
537	200185.75	599742.01	BT_14"SPRUCE
538	200292.99	599597.61	BT_8"SPRUCE
539	200254.22	599661.26	BT_16"SPRUCE



STATE OF ALASKA DEPARTMENT OF TRANSPORTATION AND PUBLIC FACILITIES
 6869 GLADIER HIGHWAY, JUNEAU, AK 99801
 (907) 465-1763
 POW CLARKE BAY FERRY TERMINAL & SEAPLANE FLOAT EXPANDED PARKING

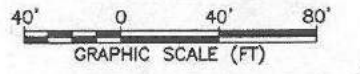
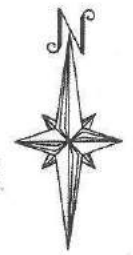
SURVEY CONTROL SHEET

NO.	DATE	REVISION	STATE	PROJECT DESIGNATION	YEAR	SHEET NO.	TOTAL SHEETS
			ALASKA	SFHWHY00005/0003195	2017	4	17

A.S.L.S. 79-181
TRACT B
STATE OF ALASKA

LEGEND

- ROW — RIGHT OF WAY LINE
- - - - EXISTING PROPERTY LINE
- OHE - OVERHEAD ELECTRIC POWER LINE
- █ EXISTING PAVEMENT (TO REMAIN)
- ▨ EXISTING PAVEMENT (REMOVE/REGRADE/REPAVE)



A.S.L.S. 79-181
TRACT C
STATE OF ALASKA

GENERAL NOTES

1. THE LOCATION OF THE EXISTING WATERLINE (PARKING AREA) AND UNDERGROUND POWER/LIGHTING CIRCUIT TO THE TRANSFER BRIDGE (STAGING AREA) ARE SHOWN ON THE PLANS IN THE APPROXIMATE LOCATION, AND MUST BE FIELD VERIFIED.
2. DISPOSE OF SOIL CONTAINING INVASIVE PLANT MATERIAL ACCORDING TO THE CONTRACTOR'S APPROVED INVASIVE PLANT CONTROL PLAN (SEE APPENDIX E).
3. REFER TO SHEET 2 FOR LIMITATIONS ON SCHEDULING DEMOLITION, PROVIDING TEMPORARY PARKING & STAGING, & OTHER CONSTRUCTION ACTIVITIES.
4. REFERENCE AND RESET EXISTING PROPERTY MONUMENTS BEFORE DISTURBING PER SHEET 3 AND SECTION 642.

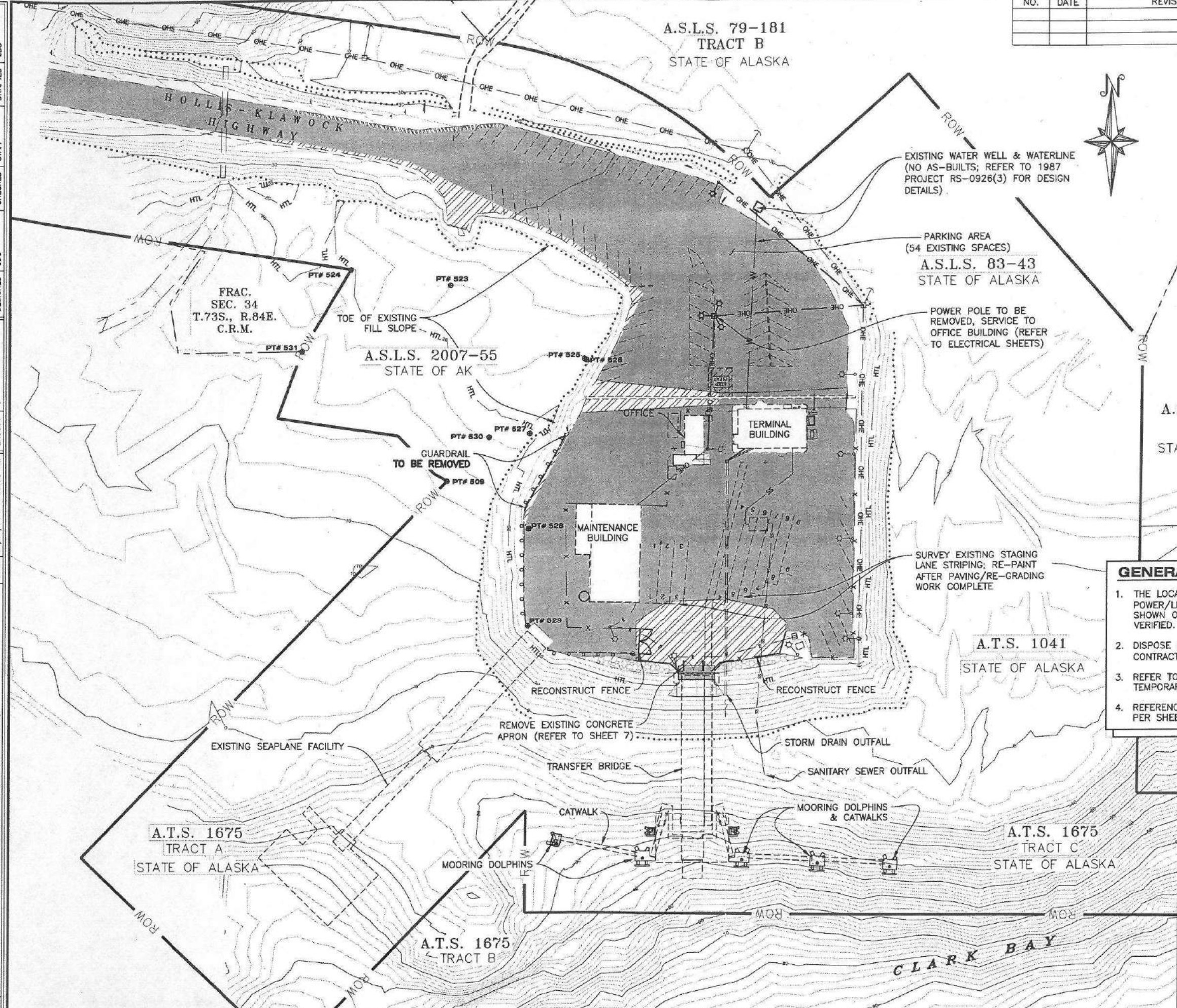
A.T.S. 1041
STATE OF ALASKA

A.T.S. 1675
TRACT A
STATE OF ALASKA

A.T.S. 1675
TRACT C
STATE OF ALASKA

A.T.S. 1675
TRACT B

CLARK BAY



FILE: Q:\Pow SFHWY00005\VF\PLANS\SET\FINAL\04 - EXISTING SITE PLAN.dwg
 DATE: 10/13/2017 8:36:36 AM LAYOUT: 4
 DESIGNED: JDO CHECKED: STAFF DRAFTED: JDO



STATE OF ALASKA DEPARTMENT OF TRANSPORTATION AND PUBLIC FACILITIES
 6880 GLACIER HIGHWAY, JUNEAU, AK 99801
 (907) 465-1763
POW CLARK BAY FERRY TERMINAL & SEAPLANE FLOAT EXPANDED PARKING

EXISTING SITE PLAN

10/13/17

NO.	DATE	REVISION	STATE	PROJECT DESIGNATION	YEAR	SHEET NO.	TOTAL SHEETS
			ALASKA	SFHWY00005/0003195	2017	5	17

A.S.L.S. 79-181
TRACT B
STATE OF ALASKA

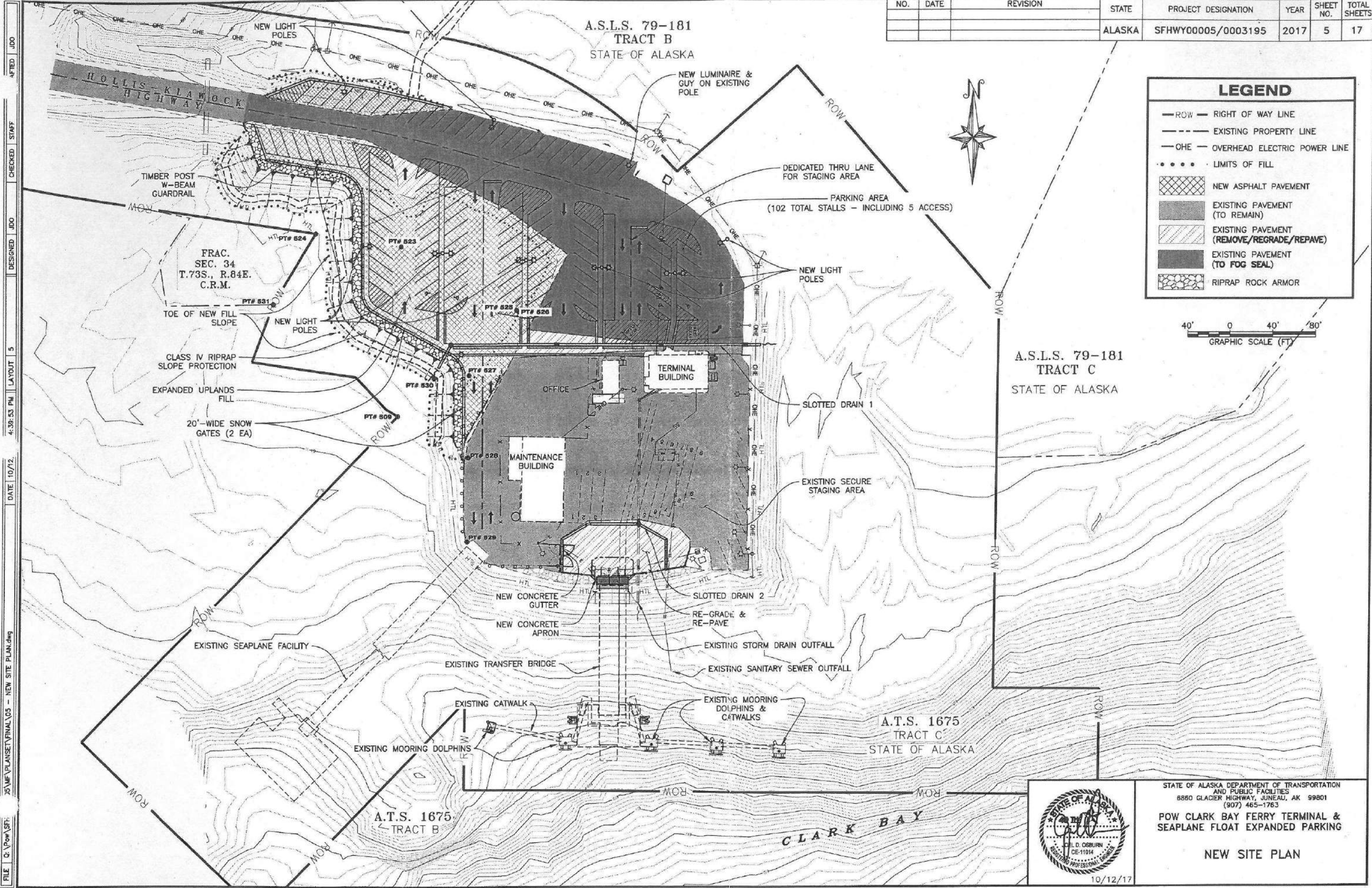
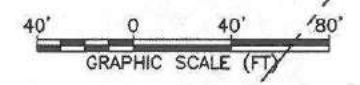
A.S.L.S. 79-181
TRACT C
STATE OF ALASKA

A.T.S. 1675
TRACT C
STATE OF ALASKA

A.T.S. 1675
TRACT B

LEGEND

- ROW — RIGHT OF WAY LINE
- - - - EXISTING PROPERTY LINE
- OHE - OVERHEAD ELECTRIC POWER LINE
- LIMITS OF FILL
- [Cross-hatched] NEW ASPHALT PAVEMENT
- [Solid grey] EXISTING PAVEMENT (TO REMAIN)
- [Diagonal lines] EXISTING PAVEMENT (REMOVE/REGRADE/REPAVE)
- [Dark grey] EXISTING PAVEMENT (TO FOG SEAL)
- [Stippled] RIPRAP ROCK ARMOR



FILE Q:\Pow\ST-35\MF\PLANSET\FINAL\05 - NEW SITE PLAN.dwg
 DATE 10/12
 4:38:53 PM LAYOUT 5
 DESIGNED JDO
 CHECKED STAFF
 APTED JDO



STATE OF ALASKA DEPARTMENT OF TRANSPORTATION AND PUBLIC FACILITIES
 8860 GLACIER HIGHWAY, JUNEAU, AK 99801
 (907) 465-1763

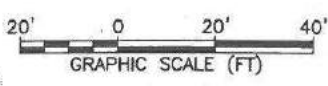
POW CLARK BAY FERRY TERMINAL & SEAPLANE FLOAT EXPANDED PARKING

NEW SITE PLAN

10/12/17

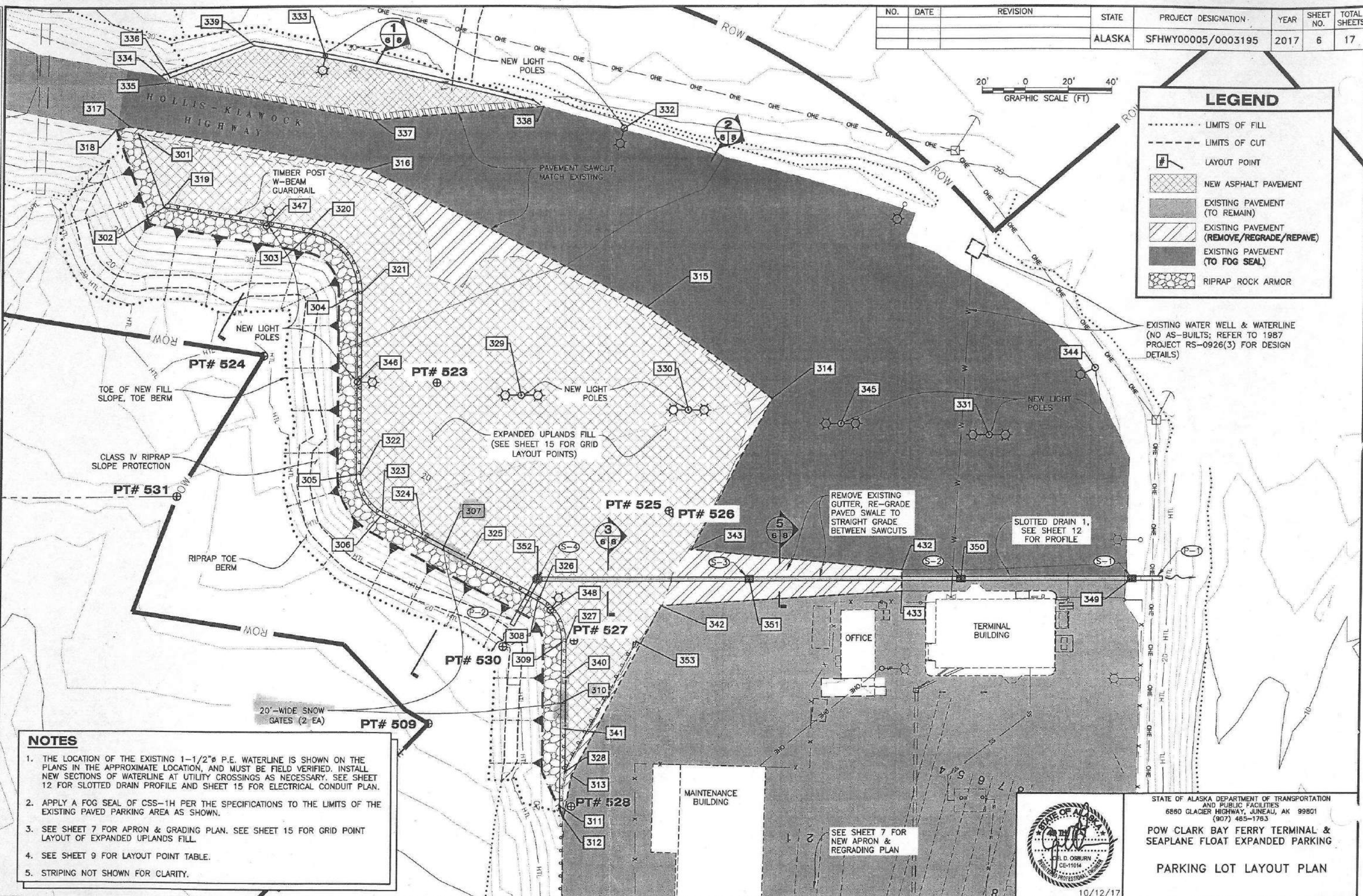
FILE C:\p\ow\sfhwy00005\m\p\plan\final\06 - PARKING LOT LAYOUT PLAN.dwg
 DATE 10/12/2017 4:45:55 PM LAYOUT 6
 DESIGNED JDO
 CHECKED STAFF
 DRAFTED JDO

NO.	DATE	REVISION	STATE	PROJECT DESIGNATION	YEAR	SHEET NO.	TOTAL SHEETS
			ALASKA	SFHwy00005/0003195	2017	6	17



LEGEND

- LIMITS OF FILL
- LIMITS OF CUT
- # LAYOUT POINT
- [Cross-hatched box] NEW ASPHALT PAVEMENT
- [Solid grey box] EXISTING PAVEMENT (TO REMAIN)
- [Diagonal lines box] EXISTING PAVEMENT (REMOVE/REGRADE/REPAVE)
- [Dark grey box] EXISTING PAVEMENT (TO FOG SEAL)
- [Stippled box] RIPRAP ROCK ARMOR



- ### NOTES
1. THE LOCATION OF THE EXISTING 1-1/2" P.E. WATERLINE IS SHOWN ON THE PLANS IN THE APPROXIMATE LOCATION, AND MUST BE FIELD VERIFIED. INSTALL NEW SECTIONS OF WATERLINE AT UTILITY CROSSINGS AS NECESSARY. SEE SHEET 12 FOR SLOTTED DRAIN PROFILE AND SHEET 15 FOR ELECTRICAL CONDUIT PLAN.
 2. APPLY A FOG SEAL OF CSS-1H PER THE SPECIFICATIONS TO THE LIMITS OF THE EXISTING PAVED PARKING AREA AS SHOWN.
 3. SEE SHEET 7 FOR APRON & GRADING PLAN. SEE SHEET 15 FOR GRID POINT LAYOUT OF EXPANDED UPLANDS FILL.
 4. SEE SHEET 9 FOR LAYOUT POINT TABLE.
 5. STRIPING NOT SHOWN FOR CLARITY.

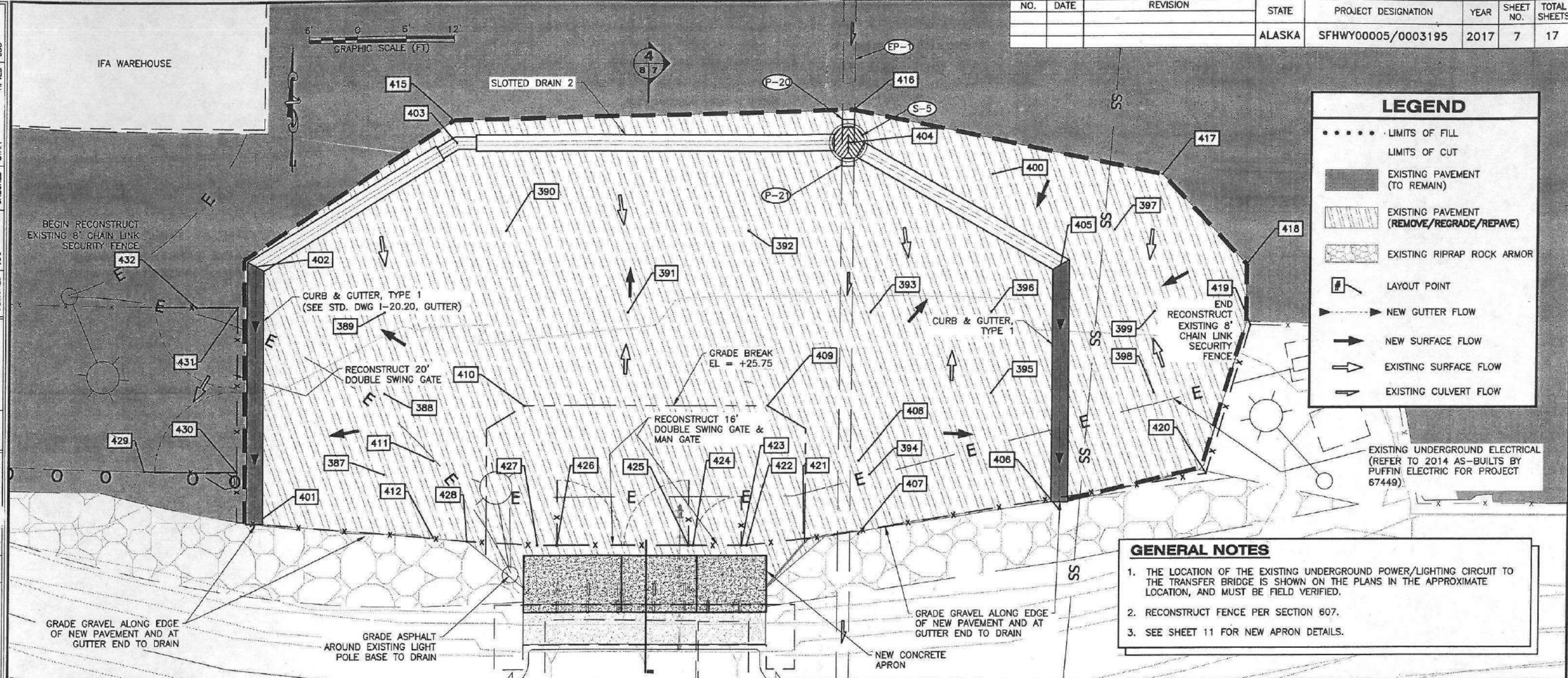


STATE OF ALASKA DEPARTMENT OF TRANSPORTATION AND PUBLIC FACILITIES
 6650 GLACIER HIGHWAY, JUNEAU, AK 99801
 (907) 465-1763
POW CLARK BAY FERRY TERMINAL & SEAPLANE FLOAT EXPANDED PARKING
PARKING LOT LAYOUT PLAN
 10/12/17

SEE SHEET 7 FOR NEW APRON & REGRADE PLAN

NO.	DATE	REVISION	STATE	PROJECT DESIGNATION	YEAR	SHEET NO.	TOTAL SHEETS
			ALASKA	SFHWY00005/0003195	2017	7	17

FILE: Q:\P\pow\SP1
 DATE: 10/13
 8:47:30 AM LAYOUT 7
 DESIGNED JDO
 CHECKED STAFF
 AFTED JDO

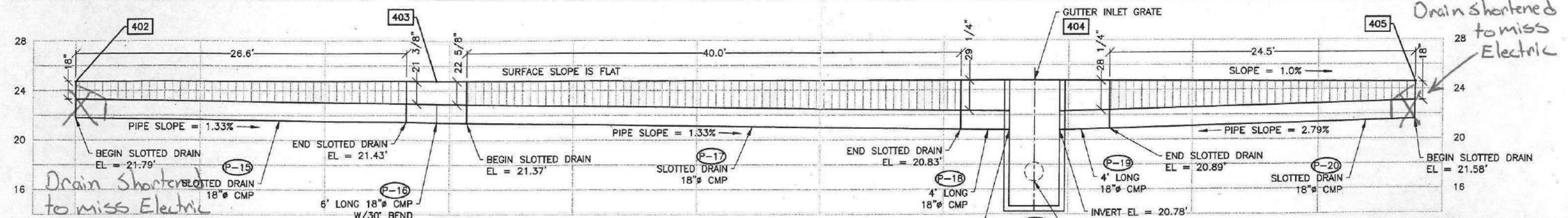


LEGEND

- LIMITS OF FILL
- LIMITS OF CUT
- [Solid Grey Box] EXISTING PAVEMENT (TO REMAIN)
- [Hatched Box] EXISTING PAVEMENT (REMOVE/REGRADE/REPAVE)
- [Stippled Box] EXISTING RIPRAP ROCK ARMOR
- [Point with 'P'] LAYOUT POINT
- [Arrow with 'N'] NEW GUTTER FLOW
- [Arrow with 'S'] NEW SURFACE FLOW
- [Arrow with 'E'] EXISTING SURFACE FLOW
- [Arrow with 'C'] EXISTING CULVERT FLOW

GENERAL NOTES

- THE LOCATION OF THE EXISTING UNDERGROUND POWER/LIGHTING CIRCUIT TO THE TRANSFER BRIDGE IS SHOWN ON THE PLANS IN THE APPROXIMATE LOCATION, AND MUST BE FIELD VERIFIED.
- RECONSTRUCT FENCE PER SECTION 607.
- SEE SHEET 11 FOR NEW APRON DETAILS.



**PROFILE
SLOTTED DRAIN 2**



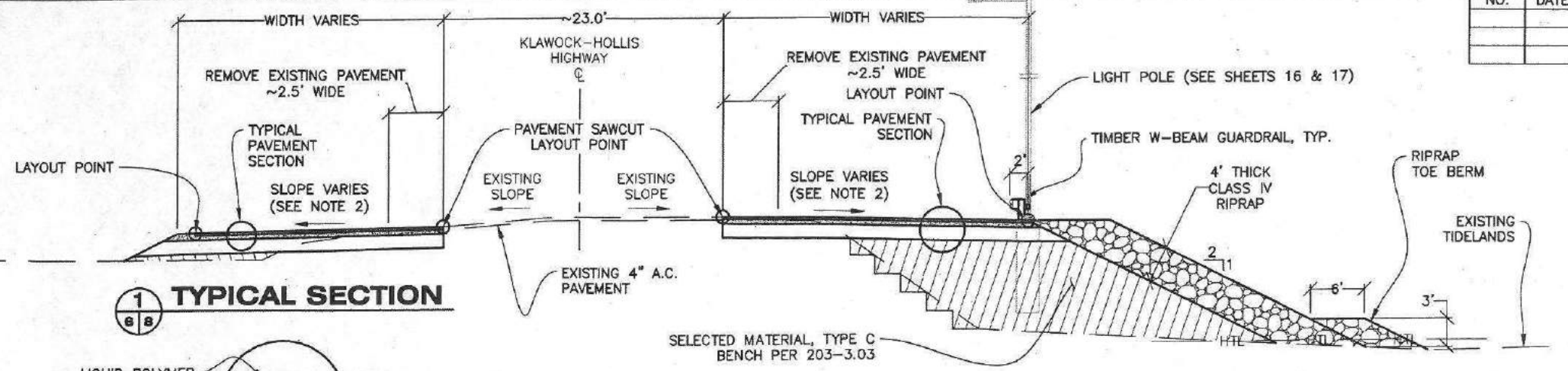
STATE OF ALASKA DEPARTMENT OF TRANSPORTATION AND PUBLIC FACILITIES
 6860 GLACIER HIGHWAY, JUNEAU, AK 99801
 (907) 455-1763

POW CLARK BAY FERRY TERMINAL & SEAPLANE FLOAT EXPANDED PARKING

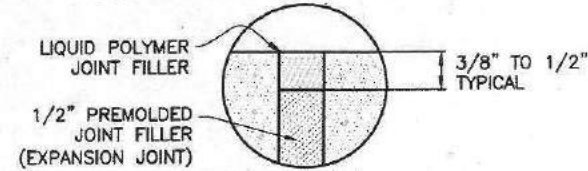
APRON REGRAIDING PLAN & SLOTTED DRAIN 2 PROFILE

10/13/17

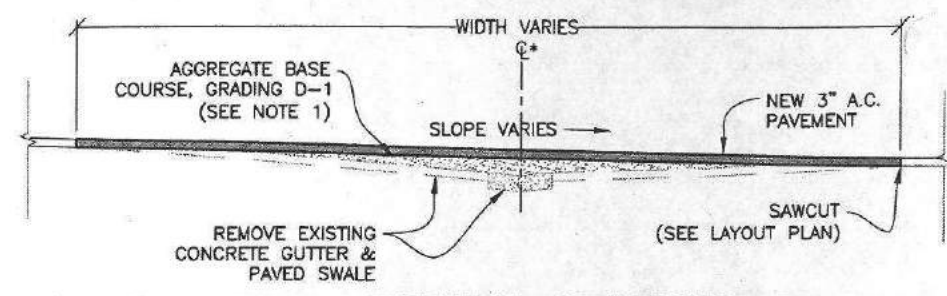
NO.	DATE	REVISION	STATE	PROJECT DESIGNATION	YEAR	SHEET NO.	TOTAL SHEETS
			ALASKA	SFHWY00005/0003195	2017	8	17



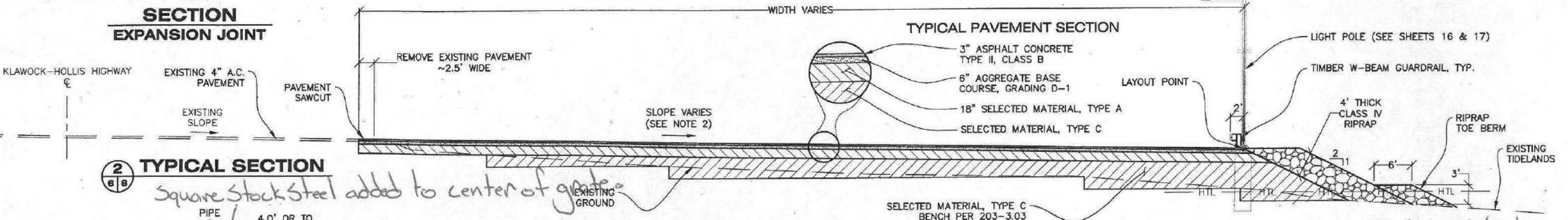
1 TYPICAL SECTION
6/8



SECTION EXPANSION JOINT

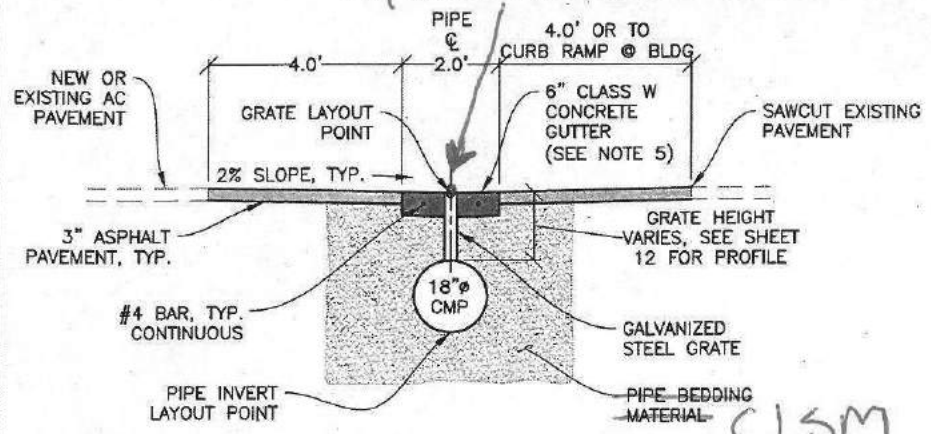


5 TYPICAL SECTION RE-GRADE EXISTING SWALE
6/8
* SLOTTED DRAIN NOT SHOWN FOR DISPLAY PURPOSES



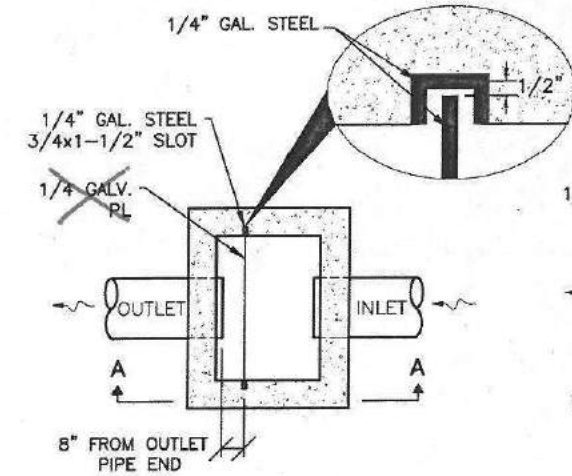
2 TYPICAL SECTION
6/8

Square Stock Steel added to center of grate

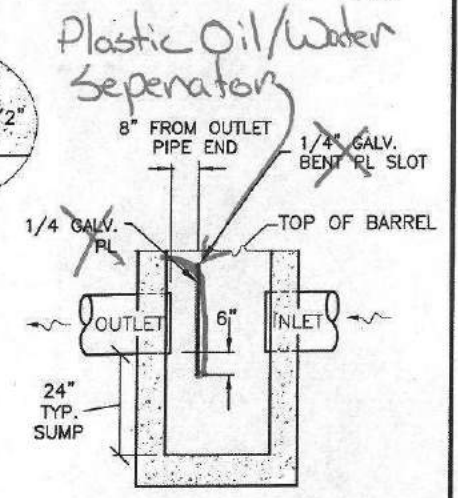


3 TYPICAL SECTION SLOTTED DRAIN 1
6/8

- GENERAL TYPICAL SECTION NOTES:**
- AFTER REMOVING EXISTING ASPHALT PAVEMENT, WHERE SHOWN, REGRADE EXISTING BASE COURSE AND ADD NEW D-1 BASE COURSE, AS NEEDED, TO LINE AND GRADE PROVIDED ON LAYOUT PLAN. RECYCLED ASPHALT MATERIAL (RAM) MAY BE SUBSTITUTED FOR D-1 BASED ON CONDITIONS IN SPEC SECTION 301.
 - REFER TO SITE LAYOUT PLAN FOR SURFACE GRADING INFORMATION. PAVEMENT SLOPE VARIES DEPENDING ON EDGE LAYOUT POINTS.
 - APPLY A FOG SEAL OF CSS-1H PER THE SPECIFICATIONS TO THE LIMITS OF THE EXISTING PAVED PARKING AREA AS SHOWN ON THE PLANS.
 - AFTER REMOVING EXISTING PAVEMENT, GRAVEL SURFACES SHALL BE MAINTAINED UNTIL NEW PAVEMENT IS PLACED.
 - SHAPE CONCRETE GUTTER ACCORDING TO STD. DWG. 1-20.20. PROVIDE WEAKENED PLANE JOINTS (1/4" WIDE X 2" DEEP) EVERY 5-FEET, AND EXPANSION JOINTS (SEE DETAIL THIS SHEET) EVERY 40-FEET.



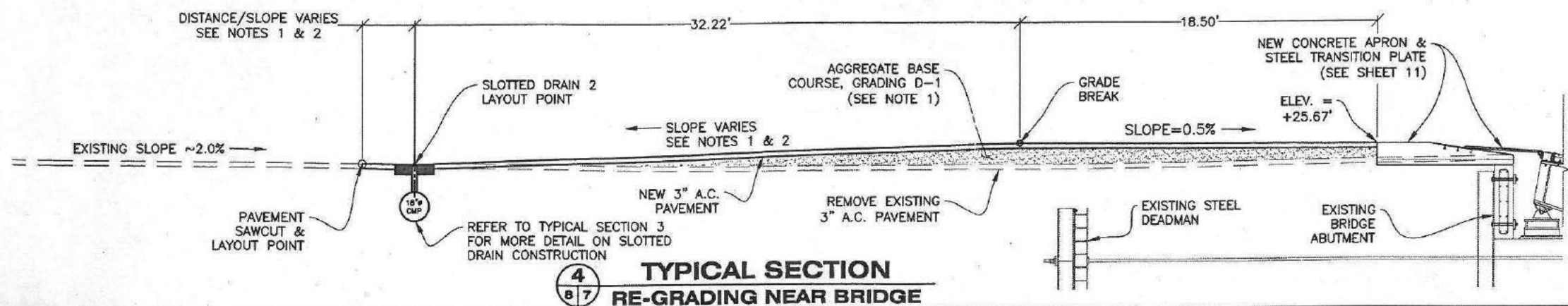
PLAN VIEW



SECTION A-A

OIL/WATER SEPARATOR

- INLET FRAME & GRATE NOT SHOWN FOR CLARITY.
- TYPE A INLET SHOWN. USE SAME DIMENSIONS FOR TYPE 1 INLETS.



4 TYPICAL SECTION RE-GRADING NEAR BRIDGE
6/7



STATE OF ALASKA DEPARTMENT OF TRANSPORTATION AND PUBLIC FACILITIES
6860 GLACIER HIGHWAY, JUNEAU, AK 99801
(907) 465-1763
POW CLARK BAY FERRY TERMINAL & SEAPLANE FLOAT EXPANDED PARKING

TYPICAL SECTIONS

10/13/17

FILE Q:\Pow\SFHWY00005\WF\PLANS\FINAL\08-9 - TYPICAL SECTIONS & LAYOUT POINT TABLE.dwg DATE 10/13/2017 8:55:56 AM LAYOUT 8 CHECKED STAFF DRAFTED JDO DESIGNED JDO

FILE C:\Pow\SFH 5\MP\PLANSET\FINAL\08-9 - TYPICAL SECTIONS & LAYOUT POINT TABLE.dwg DATE 10/13/13 9:15:23 AM LAYOUT 9 DESIGNED JDO CHECKED STAFF FTED JDO

LAYOUT POINT TABLE

PNT #	NORTH	EAST	ELEV	DESCRIPTION
201	200,459.10	599,480.21	-	SALVAGED SIGN
202	200,453.32	599,515.60	-	SALVAGED SIGN
203	200,444.82	599,547.55	-	SALVAGED SIGN
204	200,440.33	599,579.74	-	SALVAGED SIGN
205	200,160.67	599,766.18	-	SALVAGED SIGN
206	200,358.53	599,932.95	-	SALVAGED SIGN
207	200,325.68	599,989.27	-	SALVAGED SIGN
208	200,370.80	599,624.41	-	NEW SIGN
209	200,377.47	599,689.24	-	NEW SIGN
210	200,369.44	599,732.39	-	NEW SIGN
211	200,342.59	599,677.79	-	NEW SIGN
212	200,293.76	599,677.79	-	NEW SIGN
213	200,446.27	599,639.47	-	NEW SIGN
214	200,426.51	599,733.93	-	NEW SIGN
215	200,402.38	599,823.27	-	NEW SIGN
216	200,377.79	599,912.30	-	NEW SIGN
217	200,254.03	599,744.79	-	NEW SIGN
218	200,233.18	599,749.79	-	NEW SIGN
219	200,228.15	599,842.51	-	NEW SIGN
220	200,223.15	599,884.09	-	NEW SIGN
221	200,245.64	599,965.79	-	NEW SIGN
222	200,227.13	599,965.80	-	NEW SIGN
223	200,240.76	599,970.79	-	NEW SIGN
301	200,406.40	599,567.07	37.46'	EDGE OF PAVEMENT
302	200,371.78	599,579.48	36.28'	EDGE PAVEMENT
303	200,359.50	599,647.75	33.05'	EDGE PAVEMENT PC R=28'
304	200,331.94	599,670.79	30.83'	EDGE PAVEMENT PT
305	200,245.96	599,670.79	28.24'	EDGE PAVEMENT PC R=22
306	200,226.61	599,682.33	27.68'	EDGE PAVEMENT PT
307	200,210.59	599,711.97	26.95'	EDGE PAVEMENT SNOW GATE
308	200,186.43	599,756.67	26.00'	EDGE PAVEMENT PC R=22
309	200,186.94	599,768.21	25.75'	EDGE PAVEMENT PT
310	200,138.19	599,768.03	25.15'	EDGE PAVEMENT SNOW GATE
311	200,089.95	599,767.74	24.13'	EDGE PAVEMENT
312	200,084.28	599,769.73	24.03'	MATCH EXISTING
313	200,104.23	599,773.20	24.39'	MATCH EXISTING
314	200,282.02	599,866.72	27.89'	MATCH EXISTING
315	200,325.37	599,807.78	29.08'	MATCH EXISTING
316	200,389.67	599,675.26	32.90'	MATCH EXISTING
317	200,409.69	599,563.06	37.75'	MATCH EXISTING
318	200,408.28	599,557.03	37.89'	MATCH EXISTING
319	200,373.54	599,580.95	-	GRDRL
320	200,361.46	599,648.10	-	GRDRL PC R=30'
321	200,331.94	599,672.79	-	GRDRL PT
322	200,245.96	599,672.79	-	GRDRL PC R=20
323	200,228.37	599,683.28	-	GRDRL PT
324	200,218.12	599,702.25	-	GRDRL BREAK
325	200,206.58	599,723.59	-	GRDRL BREAK
326	200,188.17	599,757.65	-	GRDRL PC R=24
327	200,167.06	599,770.24	-	GRDRL PT
328	200,105.94	599,770.24	-	GRDRL MATCH EXISTING
329	200,283.36	599,748.29	-	LIGHT POLE
330	200,276.55	599,827.30	-	LIGHT POLE
331	200,264.74	599,969.29	-	LIGHT POLE
332	200,408.91	599,796.35	-	LIGHT POLE
333	200,442.53	599,654.52	-	LIGHT POLE
334	200,433.31	599,577.45	36.96'	MATCH EXISTING
335	200,430.10	599,581.37	37.04'	MATCH EXISTING
336	200,432.60	599,581.63	36.98'	EDGE OF PAVEMENT
337	200,412.57	599,677.92	32.90'	MATCH EXISTING
338	200,418.92	599,757.63	31.31'	MATCH EXISTING
339	200,447.39	599,620.99	34.89'	EDGE OF PAVEMENT
340	200,150.31	599,770.24	-	GRDRL BREAK
341	200,126.05	599,770.24	-	GRDRL BREAK
342	200,184.06	599,815.20	26.72'	MATCH EXISTING
343	200,210.67	599,829.19	27.24'	MATCH EXISTING
344	200,296.35	600,018.33	-	LIGHT POLE
345	200,270.02	599,899.34	-	LIGHT POLE
346	200,289.59	599,671.01	-	LIGHT POLE
347	200,363.02	599,627.45	-	LIGHT POLE
348	200,181.93	599,762.68	-	LIGHT POLE
349	200,196.85	600,036.54	26.44'	S-1

LAYOUT POINT TABLE (cont'd.)

PNT #	NORTH	EAST	ELEV	DESCRIPTION
350	200,196.78	599,956.54	26.76'	S-2
351	200,196.68	599,856.53	26.76'	S-3
352	200,196.59	599,756.53	26.68'	S-4
353	200,167.24	599,803.84	-	GRDRL REMOVE EXISTING
354	200,391.32	599,580.63	36.57'	GRID PT
355	200,386.05	599,610.16	35.16'	GRID PT
356	200,380.78	599,639.69	33.89'	GRID PT
357	200,375.51	599,669.23	32.61'	GRID PT
358	200,370.24	599,698.76	31.60'	GRID PT
359	200,340.70	599,693.49	30.70'	GRID PT
360	200,335.43	599,723.02	30.20'	GRID PT
361	200,330.16	599,752.56	29.75'	GRID PT
362	200,324.89	599,782.09	29.33'	GRID PT
363	200,319.62	599,811.62	28.97'	GRID PT
364	200,284.82	599,835.89	28.17'	GRID PT
365	200,290.09	599,806.35	28.42'	GRID PT
366	200,295.36	599,776.82	28.66'	GRID PT
367	200,300.63	599,747.29	28.98'	GRID PT
368	200,305.90	599,717.75	29.40'	GRID PT
369	200,311.17	599,688.22	29.89'	GRID PT
370	200,281.63	599,682.95	29.07'	GRID PT
371	200,276.36	599,712.48	28.63'	GRID PT
372	200,271.09	599,742.02	28.36'	GRID PT
373	200,265.82	599,771.55	28.11'	GRID PT
374	200,260.55	599,801.08	27.91'	GRID PT
375	200,255.28	599,830.62	27.76'	GRID PT
376	200,225.75	599,825.35	27.38'	GRID PT
377	200,231.02	599,795.81	27.53'	GRID PT
378	200,236.29	599,766.28	27.73'	GRID PT
379	200,241.56	599,736.75	27.88'	GRID PT
380	200,246.83	599,707.21	28.05'	GRID PT
381	200,252.10	599,677.68	28.30'	GRID PT
382	200,212.03	599,731.48	27.20'	GRID PT
383	200,206.76	599,761.01	27.11'	GRID PT
384	200,201.49	599,790.54	26.84'	GRID PT
385	200,171.95	599,785.27	26.13'	GRID PT
386	200,142.42	599,780.00	25.37'	GRID PT
387	199,985.91	599,878.57	25.11'	GRID PT
388	199,995.91	599,878.57	25.22'	GRID PT
389	200,005.91	599,878.57	25.13'	GRID PT
390	200,015.91	599,893.57	25.10'	GRID PT
391	200,005.91	599,908.57	25.40'	GRID PT
392	200,015.91	599,923.54	25.10'	GRID PT
393	200,005.91	599,938.57	25.20'	GRID PT
394	199,985.91	599,938.57	25.37'	GRID PT
395	199,995.91	599,953.57	24.73'	GRID PT
396	200,005.91	599,953.57	24.80'	GRID PT
397	200,015.91	599,968.57	24.59'	GRID PT
398	199,995.91	599,973.57	24.56'	GRID PT
399	200,005.91	599,973.57	24.55'	GRID PT
400	200,022.72	599,953.57	24.73'	GRID
401	199,979.83	599,862.57	24.35'	GUTTER
402	200,011.64	599,862.57	24.70'	GUTTER SD2 BEGIN
403	200,026.66	599,887.38	24.80'	SD2 ANGLE PT
404	200,026.66	599,935.89	24.80'	S-5
405	200,011.64	599,962.00	24.50'	GUTTER SD2 END
406	199,982.47	599,962.00	24.30'	GUTTER
407	199,977.65	599,930.68	25.75'	GR BK
408	199,991.59	599,930.68	25.75'	GR BK
409	199,994.44	599,925.95	25.75'	GR BK
410	199,994.44	599,895.95	25.75'	GR BK
411	199,991.59	599,891.23	25.75'	GR BK
412	199,976.15	599,891.23	25.75'	GR BK
413	199,986.37	599,849.08	23.87'	GRDRL
414	200,029.46	599,887.02	24.80'	CATCH CUT
415	200,030.69	599,936.35	24.83'	CATCH CUT R=15
416	200,022.69	599,974.43	24.74'	CATCH CUT
417	200,011.64	599,984.72	24.60'	CATCH CUT
418	200,004.23	599,985.23	24.60'	FENCE
419	199,985.90	599,980.01	24.60'	FENCE
420	199,978.29	599,933.19	-	FENCE

NO.	DATE	REVISION	STATE	PROJECT DESIGNATION	YEAR	SHEET NO.	TOTAL SHEETS
			ALASKA	SFHWY00005/0003195	2017	9	17

LAYOUT POINT TABLE (cont'd.)

PNT #	NORTH	EAST	ELEV	DESCRIPTION
421	199,977.22	599,923.50	-	FENCE
422	199,977.22	599,922.81	-	FENCE_GATEPOST
423	199,977.22	599,916.81	-	FENCE
424	199,977.22	599,916.25	-	FENCE_GATEPOST
425	199,977.22	599,899.97	-	FENCE_GATEPOST
426	199,977.22	599,897.56	-	FENCE
427	199,977.75	599,888.88	-	FENCE
428	199,980.08	599,860.39	-	FENCE
429	199,986.23	599,860.39	-	FENCE_GATEPOST
430	200,006.63	599,860.39	-	FENCE_GATEPOST
431	200,006.63	599,855.39	24.50'	FENCE
432	200,201.00	599,928.79	26.69'	MATCH EXISTING
433	200,190.79	599,928.79	26.62'	MATCH EXISTING
450	200,191.48	599,939.55	-	UG-ELECTRIC ANGLE PT

- NOTES:**
- REFER TO SHEET 10 FOR THE PIPE SUMMARY TABLE.
 - COORDINATES WITH ELEVATION VALUE "-" ARE FOR 2D PLAN INFORMATION ONLY.
 - REFER TO PLANS AND STANDARD DRAWINGS FOR REFERENCE POINT TO LAYOUT FINAL LOCATION OF OBJECTS, INCLUDING DEPRESSED FLOW LINE FOR INLETS, GUARDRAIL FACE, ETC.

604 DRAINAGE STRUCTURE SUMMARY

MH #	PNT. #	TYPE	GRATE/LID ELEVATION	REMARKS
S-1	349	A	26.44	OIL/H2O SEPARATOR
S-2	350	A	26.76	
S-3	351	A	26.76	
S-4	352	1	26.68	OIL/H2O SEPARATOR
S-5	404	1	24.70	OIL/H2O SEPARATOR

606 GUARDRAIL SUMMARY

SECTION	START POINT	END TERMINAL	END POINT	END TERMINAL	LENGTH	REMARKS
1	319	STANDARD	324	STANDARD	240	
2	325	STANDARD	340	STANDARD	81	
3	341	STANDARD	328	-	20	CONNECT TO EXISTING
-	353	STANDARD	328	-	67	REMOVE EXISTING GUARDRAIL

607 RECONSTRUCTED FENCING & GATE SUMMARY

SECTION	START POINT	END TERMINAL	END POINT	END TERMINAL	LENGTH	REMARKS
1	431	STD. POST	430	GATE POST	5	CONNECT TO EXISTING FENCE
2	430	GATE POST	429	GATE POST	20	DOUBLE SWING GATE (10'-WIDE EACH)
3	429	GATE POST	428	STD. POST	6	
4	428	STD. POST	427	STD. POST	29	
5	427	STD. POST	426	STD. POST	9	
6	426	STD. POST	425	GATE POST	3	
7	425	GATE POST	424	GATE POST	16	DOUBLE SWING GATE (8'-WIDE EACH)
8	424	GATE POST	423	STD. POST	1	
9	423	STD. POST	422	GATE POST	6	WALK GATE (6'-WIDE)
10	422	GATE POST	421	STD. POST	1	
11	421	STD. POST	420	STD. POST	10	
12	420	STD. POST	419	STD. POST	48	
13	419	STD. POST	418	STD. POST	19	CONNECT TO EXISTING FENCE

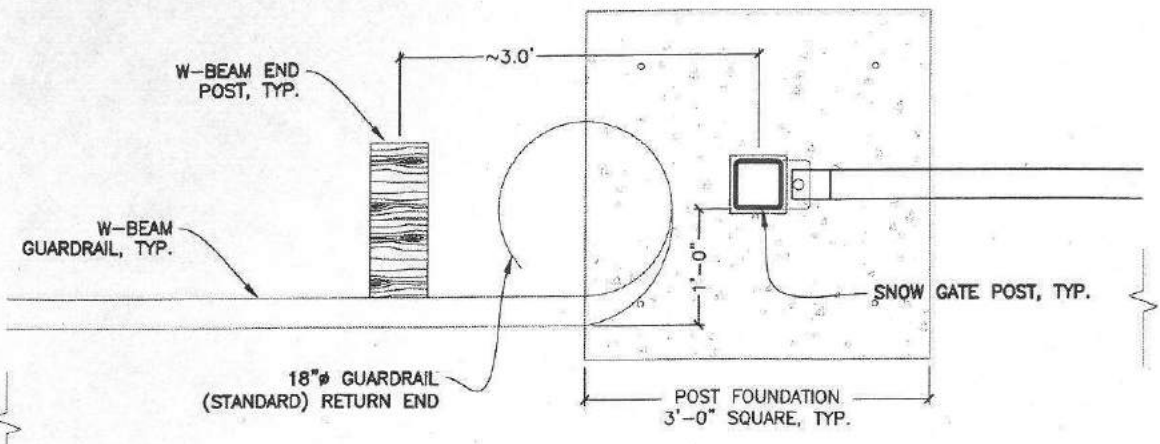


STATE OF ALASKA DEPARTMENT OF TRANSPORTATION AND PUBLIC FACILITIES
 6860 GLACIER HIGHWAY, JUNEAU, AK 99801
 (907) 465-1763
POW CLARK BAY FERRY TERMINAL & SEAPLANE FLOAT EXPANDED PARKING

SUMMARY TABLES

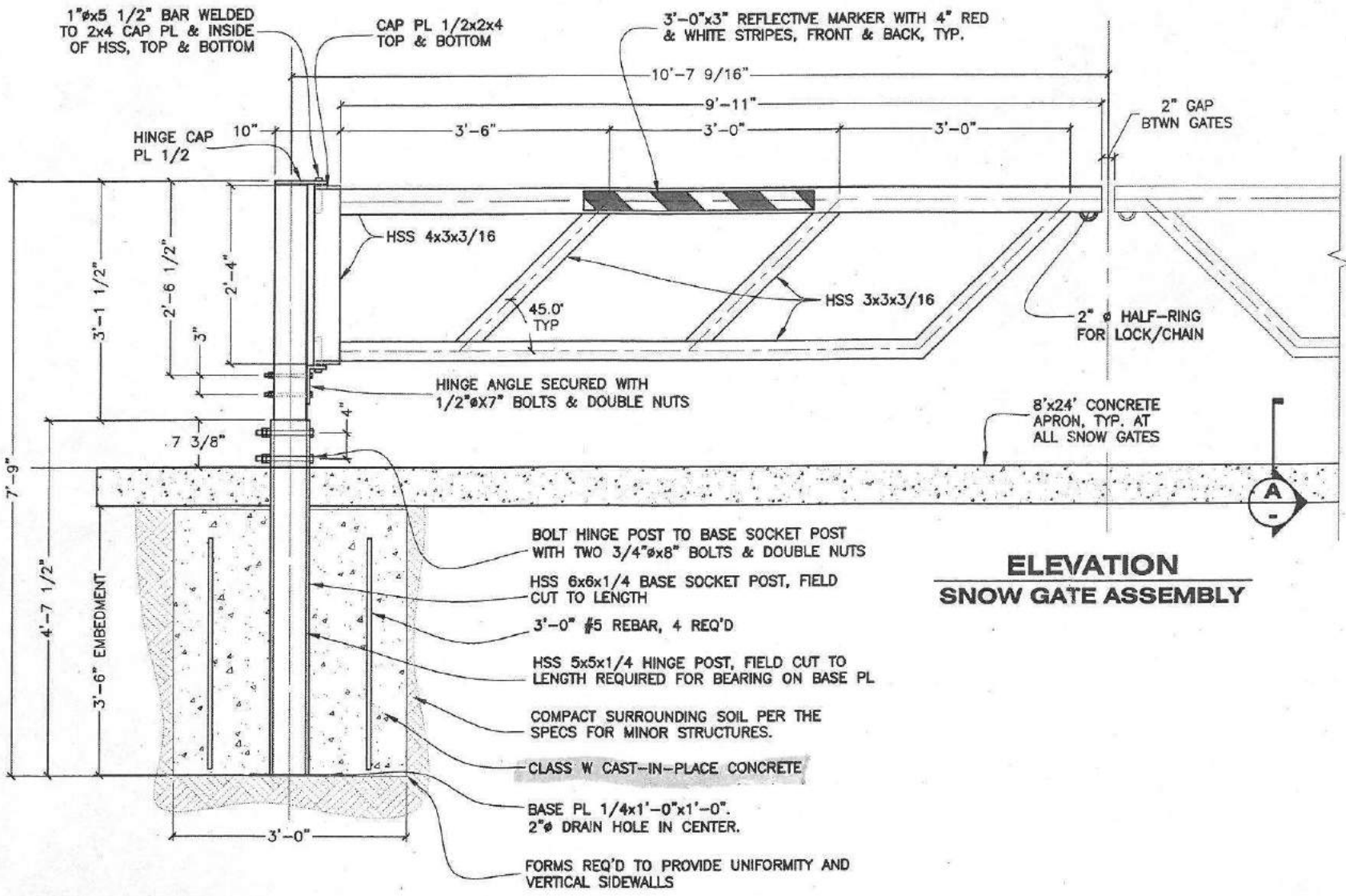
FILE C:\Pow\SFHWY00005\MF\PLANS\FINAL\10 - SNOW GATE.dwg
 DATE 10/13/2017 10:26:08 AM LAYOUT 10
 DESIGNED JDO
 CHECKED STAFF
 DRAFTED JDO

NO.	DATE	REVISION	STATE	PROJECT DESIGNATION	YEAR	SHEET NO.	TOTAL SHEETS
			ALASKA	SFHWHY00005/0003195	2017	10	17



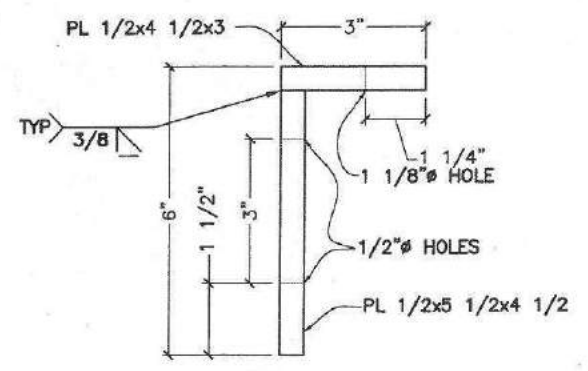
PLAN
SNOW & SWING GATES, FENCING & GUARDRAIL LAYOUT

603 PIPE SUMMARY								
PIPE LABEL	PIPE & SIZE	FROM	INLET INV.	TO	OUTLET INV.	CEN-CEN LENGTH	PIPE SLOPE	REMARKS
P-1	18" CMP	S-1	22.10	OUTLET	21.98	13	1.00%	
P-2	18" CMP	P-3	22.35	S-1	22.31	4	1.00%	
P-3	18" S.D.	P-4	23.05	P-2	22.35	70	1.00%	
P-4	18" CMP	S-2	23.08	P-3	23.05	4	1.00%	
P-5	18" CMP	P-6	23.35	S-2	23.31	4	1.00%	
P-6	18" S.D.	P-7	23.90	P-5	23.35	55	1.00%	
P-7	18" S.D.	P-8	24.25	P-6	23.90	35	1.00%	
P-8	18" CMP	S-3	24.28	P-7	24.25	4	1.00%	
P-9	18" CMP	S-3	24.27	P-10	24.21	4	1.72%	
P-10	18" S.D.	P-9	24.21	P-11	24.04	10	1.72%	
P-11	18" CMP	P-10	24.04	P-12	23.95	5	1.72%	
P-12	18" S.D.	P-11	23.95	P-13	22.67	75	1.72%	
P-13	18" CMP	P-12	22.67	S-4	22.62	4	1.72%	
P-14	18" CMP	S-4	22.38	OUTLET	22.14	26	1.00%	
P-15	18" S.D.	CAPPED END	21.79	P-16	21.43	27	1.33%	
P-16	18" CMP	P-15	21.43	P-17	21.37	6	1.33%	30° BEND
P-17	18" S.D.	P-16	21.37	P-18	20.83	40	1.33%	
P-18	18" CMP	P-17	20.83	S-5	20.78	4	1.33%	
P-19	18" CMP	P-20	20.89	S-5	20.78	4	2.79%	
P-20	18" S.D.	CAPPED END	21.58	P-19	20.89	25	2.79%	

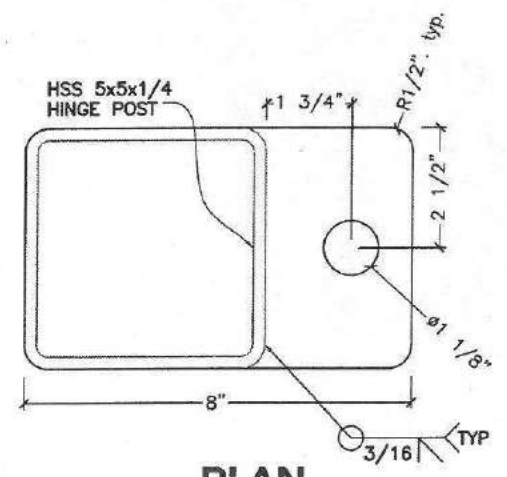


ELEVATION
SNOW GATE ASSEMBLY

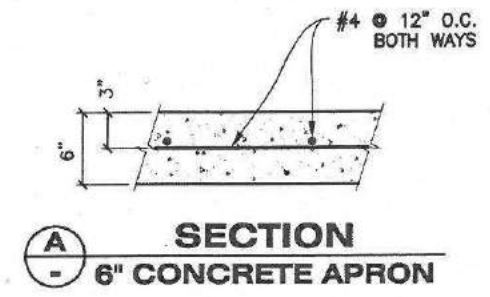
NOTES:
 1. ALL WELDS ARE 1/4" UNLESS OTHERWISE NOTED ON THIS SHEET.



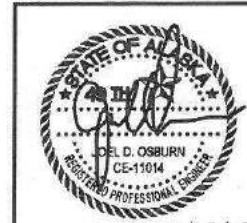
SIDE ELEVATION
HINGE ANGLE



PLAN
HINGE CAP PL 1/2



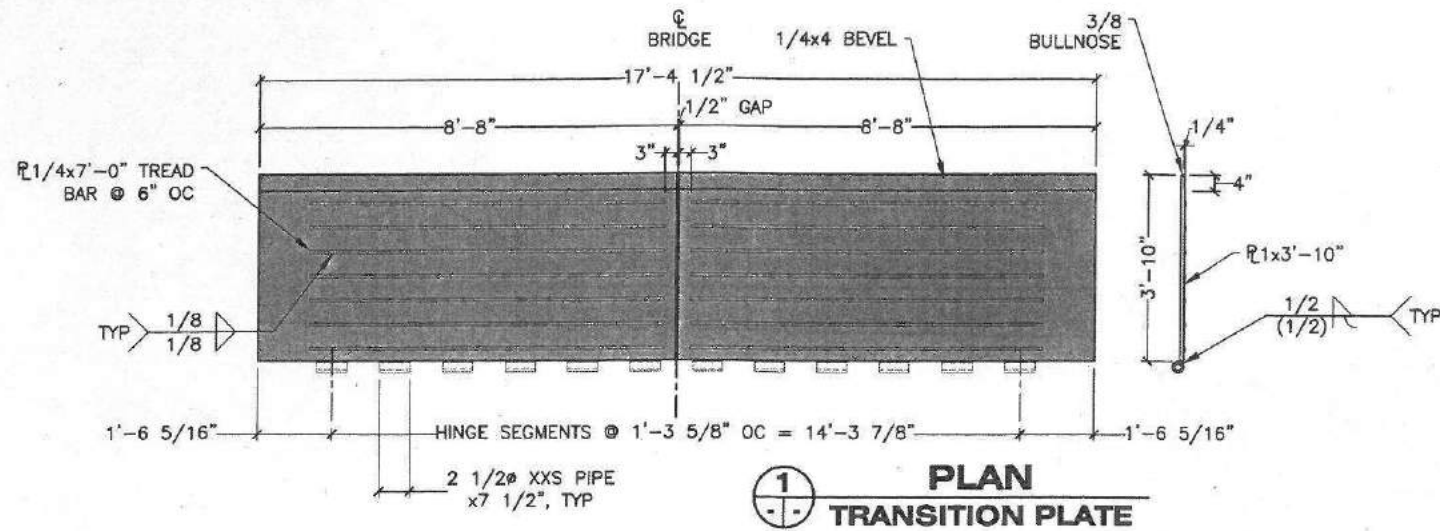
SECTION
6" CONCRETE APRON



STATE OF ALASKA DEPARTMENT OF TRANSPORTATION AND PUBLIC FACILITIES
 6680 GLACIER HIGHWAY, JUNEAU, AK 99801
 (907) 465-1753
POW CLARK BAY FERRY TERMINAL & SEAPLANE FLOAT EXPANDED PARKING
SNOW GATE

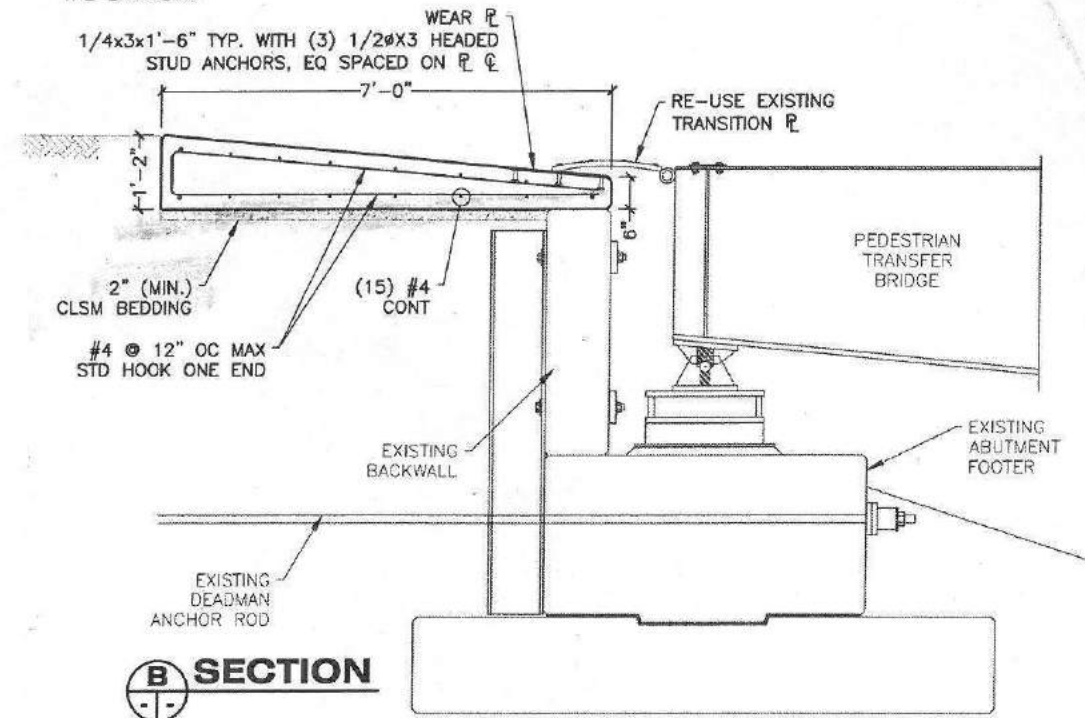
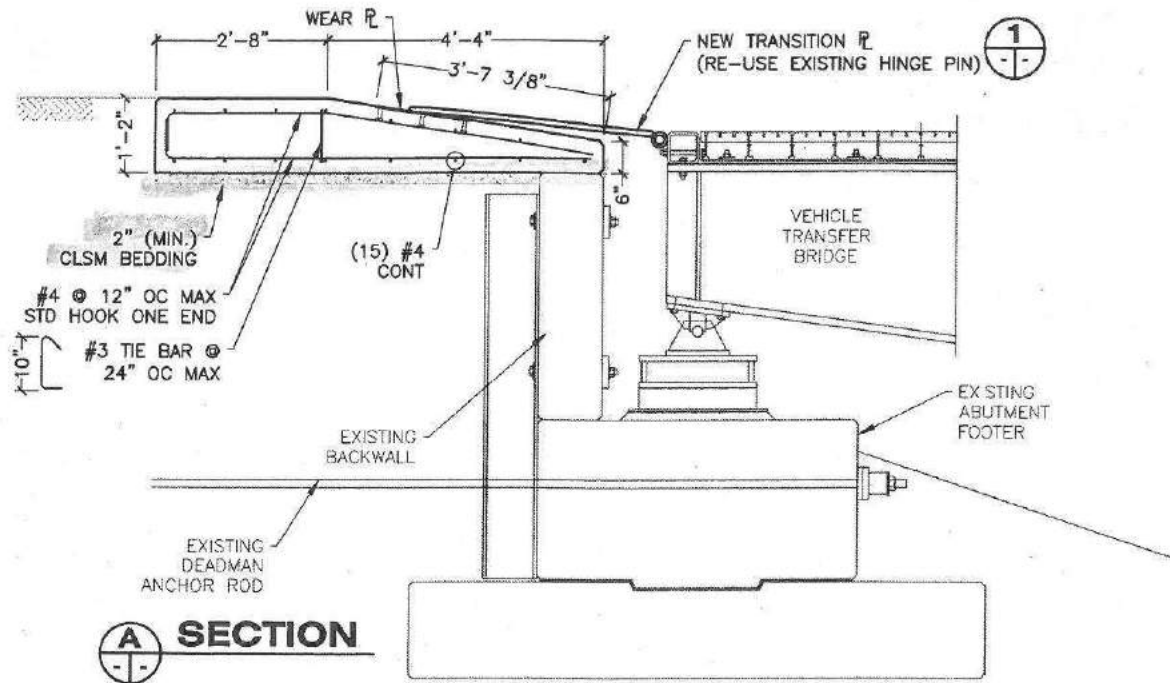
10/13/17

NO.	DATE	REVISION	STATE	PROJECT DESIGNATION	YEAR	SHEET NO.	TOTAL SHEETS
			ALASKA	SFHWHY00005/0003195	2017	11	17

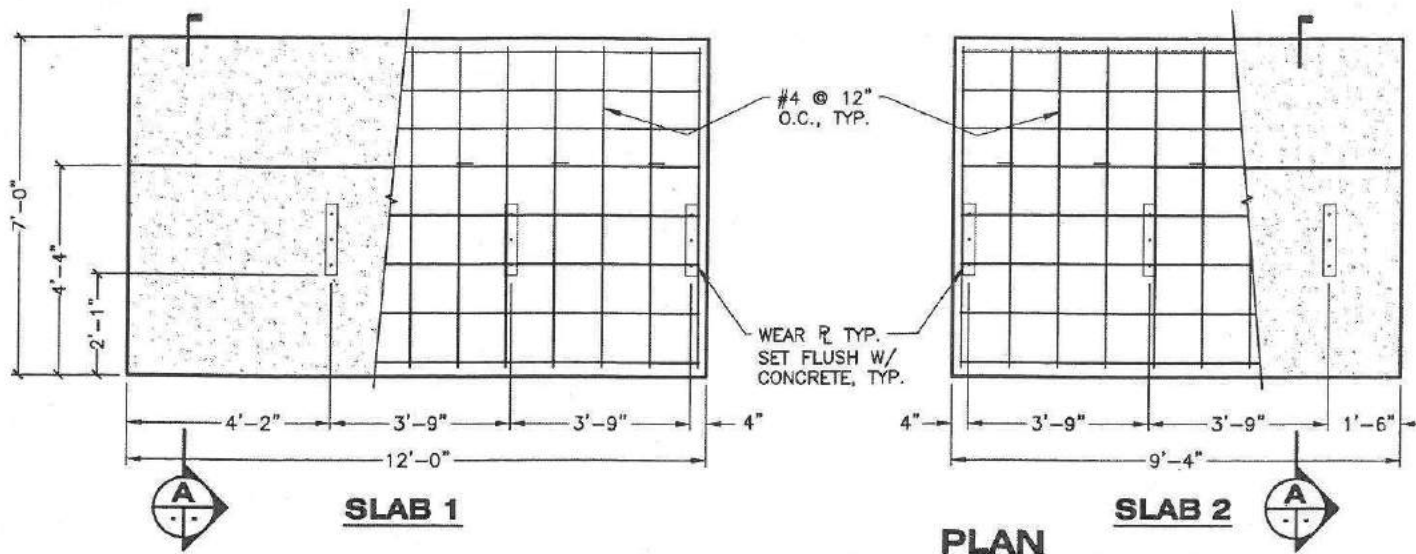


GENERAL NOTES:

- APRON SLABS SHALL BE PRECAST COMPONENTS USING CLASS A-A CONCRETE.
- TOP SURFACE OF APRON SHALL BE NON-SKID, BROOM FINISH. ALL OTHER SURFACES ARE ORDINARY FINISH. CHAMFER ALL EDGES 3/4"x3/4", UON.
- ALL REINFORCING STEEL SHALL BE ASTM 615 GR60 AND HOT DIP GALVANIZED TO ASTM A767 CLASS II BEFORE FABRICATION. CONCRETE COVER TO REINFORCEMENT IS 2" UNLESS OTHERWISE NOTED. MINIMUM BEND DIAMETER AND STANDARD HOOK DIMENSIONS PER ACI 318.
- BAR SUPPORTS SHALL BE GALVANIZED, METAL COATED WITH DIELECTRIC MATERIAL, PLASTIC, OR PRECAST CONCRETE. TIE REINFORCING BARS WITH GALVANIZED OR COATED WIRE, OR PLASTIC TIES. SHIPPING, STORAGE, HANDLING AND PLACEMENT SHALL CONFORM TO APPENDIX X1 OF ASTM A767.
- PRECAST SLABS SHALL BE BEDDED WITH MINIMUM OF 2 INCHES NON-EXCAVATABLE CLSM. UNDERSIDE OF SLAB TO BEAR DIRECTLY ON AND LEVEL WITH TOP OF BACKWALL, USING SHIMS TO LEVEL SLAB. POUR CLSM BEDDING AND PLACE SLAB. ENSURE UNIFORM CONTACT WITH BEDDING MATERIAL.
- HARDWARE, STEEL SHAPES, LIFTING DEVICES, AND EMBEDDED ITEMS SHALL BE HOT DIP GALVANIZED TO ASTM A123 OR A153, AS APPROPRIATE.
- LIFTING DEVICES SHALL BE DESIGNED BY THE MANUFACTURER'S REGISTERED PROFESSIONAL ENGINEER FOR REVIEW BY THE DEPARTMENT. LIFTING DEVICES THAT ARE NOT EXPOSED IN THE COMPLETED STRUCTURE MAY REMAIN, OTHERS SHALL BE RECESSED AND COVERED WITH EPOXY GROUT.
- TRANSITION PLATE SHALL BE ASTM A572 GR50 AND HOT DIP GALVANIZED AFTER FABRICATION. APPLY NON SKID COATING TO TOP SURFACE OF TRANSITION PLATE FOLLOWING GALVANIZING PER SECTION 513 - SYSTEM 7A.
- FOR DETAILS OF EXISTING ABUTMENT & BRIDGE GATE REFER TO CLARK BAY FERRY TERMINAL IMPROVEMENTS, PROJECT NO. 67449.
- IF REMOVAL AND REPLACEMENT OF APRON REQUIRES INTERRUPTION OF ELECTRICAL POWER TO THE BRIDGE AND RAMP, COORDINATE DISCONNECTION WITH THE ENGINEER.



712-2-22
CLSM



SLABS SHOWN SEPARATED FOR CLARITY.
PLACE SLABS EDGE-TO-EDGE IN THE FIELD.



STATE OF ALASKA DEPARTMENT OF TRANSPORTATION AND PUBLIC FACILITIES
6850 GLACIER HIGHWAY, JUNEAU, AK 99801
(907) 465-1763

POW CLARK BAY FERRY TERMINAL & SEAPLANE FLOAT EXPANDED PARKING

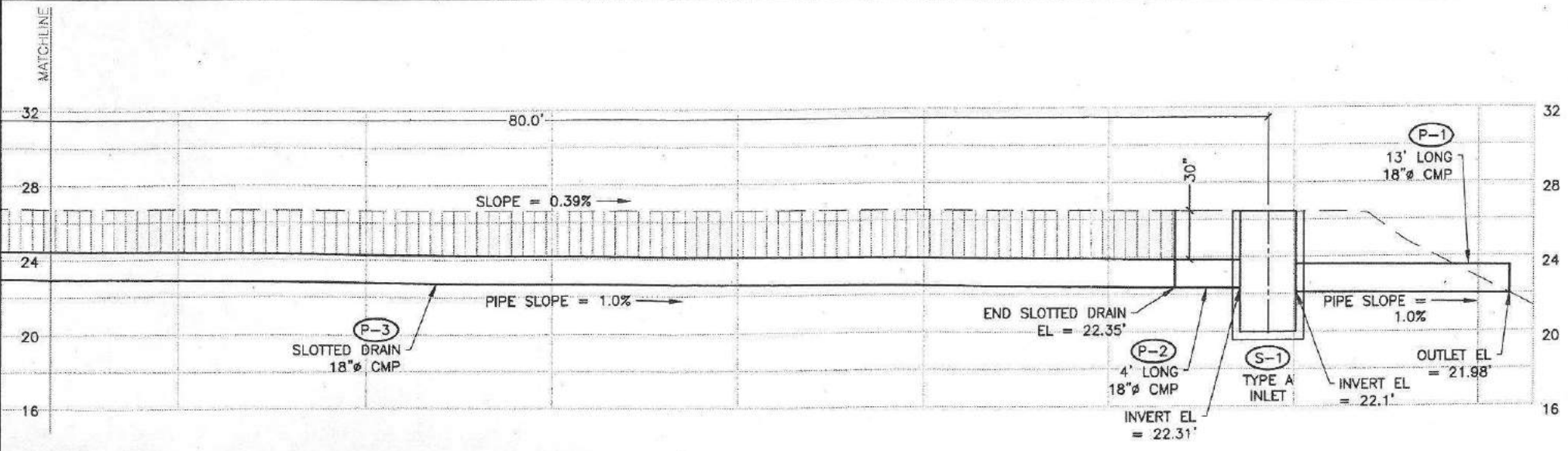
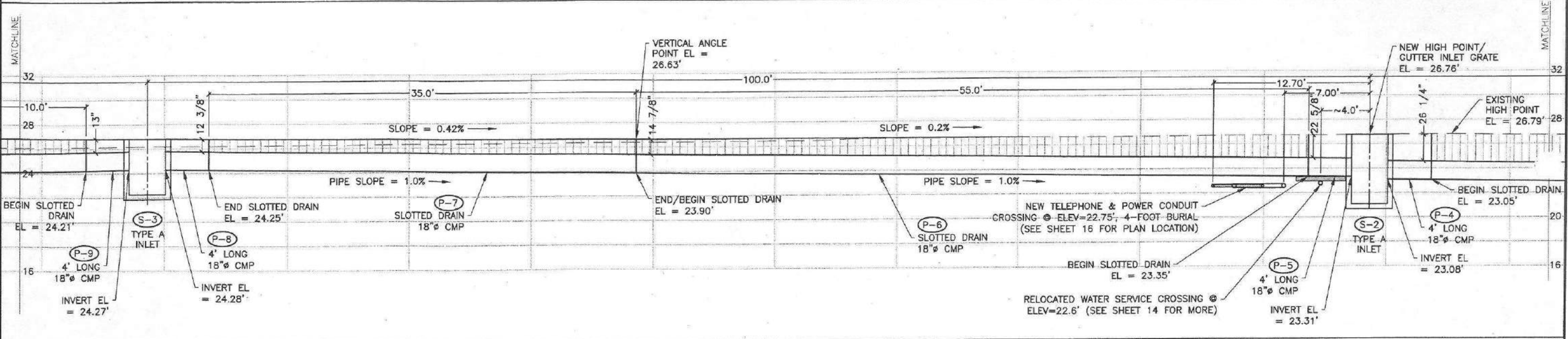
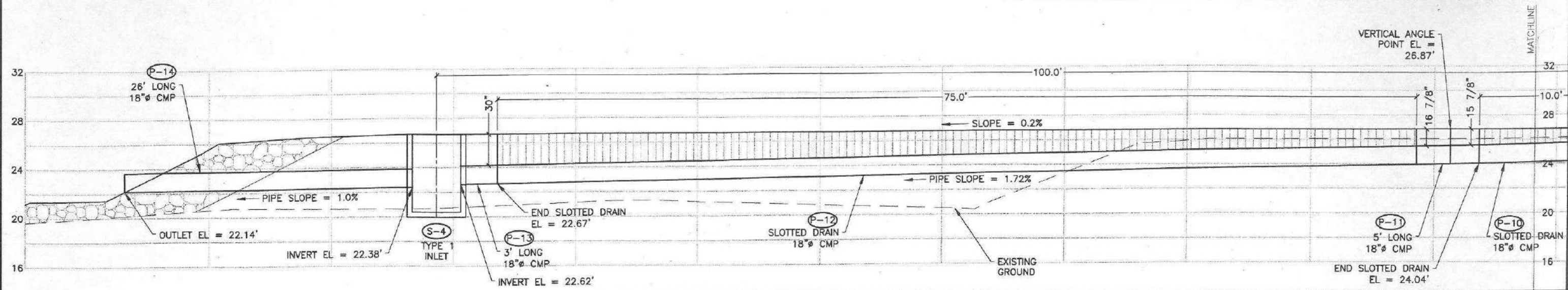
NEW BRIDGE APRON & TRANSITION PLATE

10/13/17

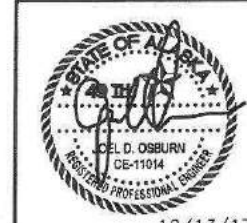
FILE Q:\Pow\SFH
 DATE 10/13
 9:19:14 AM LAYOUT 11
 DESIGNED THD
 CHECKED STAFF
 AFTED THD/JDD

NO.	DATE	REVISION	STATE	PROJECT DESIGNATION	YEAR	SHEET NO.	TOTAL SHEETS
			ALASKA	SFHWY00005/0003195	2017	12	17

FILE: Q:\P\04\SFHWY00005\MF\PLANS\FINAL\12 - SLOTTED DRAIN.dwg
 DATE: 10/13/2017 10:24:26 AM LAYOUT: 12
 DESIGNED: JDO CHECKED: STAFF DRAFTED: JDO



- GENERAL NOTES**
1. CONSTRUCT ALL INLETS WITH 24" DEEP SUMPS.
 2. INSTALL OIL/WATER SEPARATOR IN INLETS S-1 AND S-4.
 3. REFER TO SECTION 603 OF THE SPECS FOR INFORMATION ON THE SLOTTED DRAIN & CMP. SEE STANDARD DRAWINGS FOR INLET AND FRAME & GRATE DETAILS.
 4. SEE SHEET 10 FOR PIPE SUMMARY.



STATE OF ALASKA DEPARTMENT OF TRANSPORTATION AND PUBLIC FACILITIES
 6850 GLACIER HIGHWAY, JUNEAU, AK 99801
 (907) 465-1783
POW CLARK BAY FERRY TERMINAL & SEAPLANE FLOAT EXPANDED PARKING

SLOTTED DRAIN 1 PROFILE

10/13/17

NO.	DATE	REVISION	STATE	PROJECT DESIGNATION	YEAR	SHEET NO.	TOTAL SHEETS
			ALASKA	SFHWY00005/0003195	2017	13	17

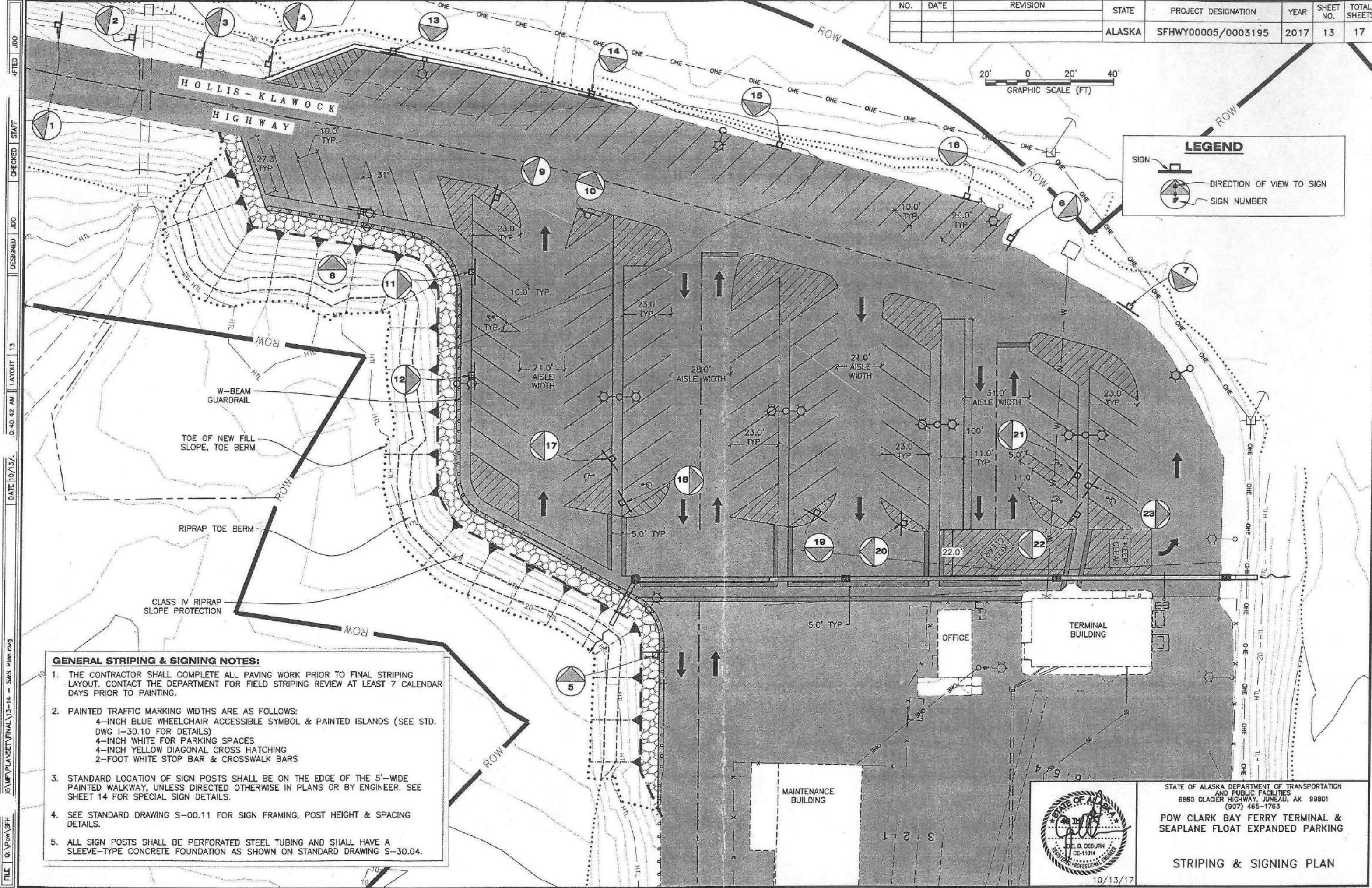


LEGEND

SIGN

DIRECTION OF VIEW TO SIGN

SIGN NUMBER



- GENERAL STRIPING & SIGNING NOTES:**
1. THE CONTRACTOR SHALL COMPLETE ALL PAVING WORK PRIOR TO FINAL STRIPING LAYOUT. CONTACT THE DEPARTMENT FOR FIELD STRIPING REVIEW AT LEAST 7 CALENDAR DAYS PRIOR TO PAINTING.
 2. PAINTED TRAFFIC MARKING WIDTHS ARE AS FOLLOWS:
 4-INCH BLUE WHEELCHAIR ACCESSIBLE SYMBOL & PAINTED ISLANDS (SEE STD. DWG 1-30.10 FOR DETAILS)
 4-INCH WHITE FOR PARKING SPACES
 4-INCH YELLOW DIAGONAL CROSS HATCHING
 2-FOOT WHITE STOP BAR & CROSSWALK BARS
 3. STANDARD LOCATION OF SIGN POSTS SHALL BE ON THE EDGE OF THE 5'-WIDE PAINTED WALKWAY, UNLESS DIRECTED OTHERWISE IN PLANS OR BY ENGINEER. SEE SHEET 14 FOR SPECIAL SIGN DETAILS.
 4. SEE STANDARD DRAWING S-00.11 FOR SIGN FRAMING, POST HEIGHT & SPACING DETAILS.
 5. ALL SIGN POSTS SHALL BE PERFORATED STEEL TUBING AND SHALL HAVE A SLEEVE-TYPE CONCRETE FOUNDATION AS SHOWN ON STANDARD DRAWING S-30.04.



STATE OF ALASKA DEPARTMENT OF TRANSPORTATION AND PUBLIC FACILITIES
 6860 GLACIER HIGHWAY, JUNEAU, AK 99801
 (907) 465-1763

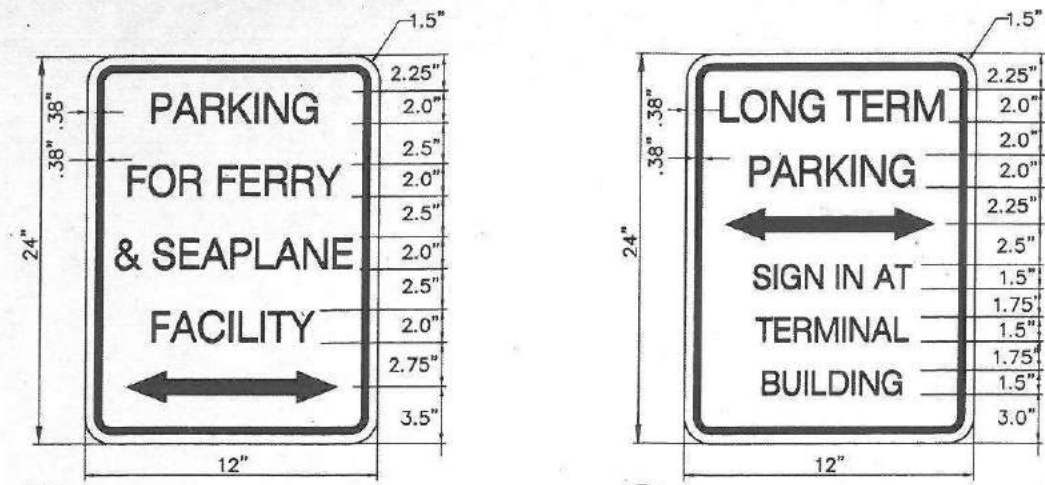
POW CLARK BAY FERRY TERMINAL & SEAPLANE FLOAT EXPANDED PARKING

STRIPING & SIGNING PLAN

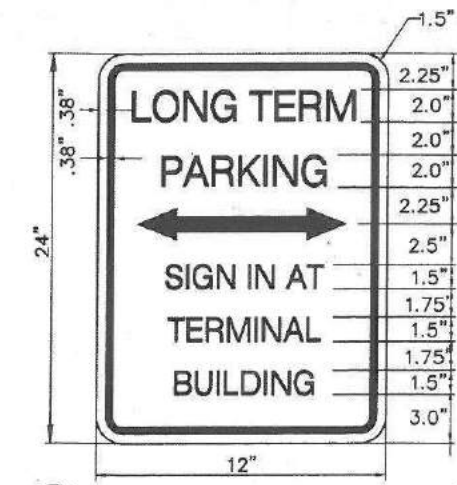
10/13/17

FILE: 0:\Pow\SPH
 15\MP\PLANSET\FINAL\13-14 - S&S Plan.dwg
 DATE: 10/13/17
 0:40:42 AM LAYOUT 13
 DESIGNED: JDO
 CHECKED: STAFF
 PLOTTED: JDO

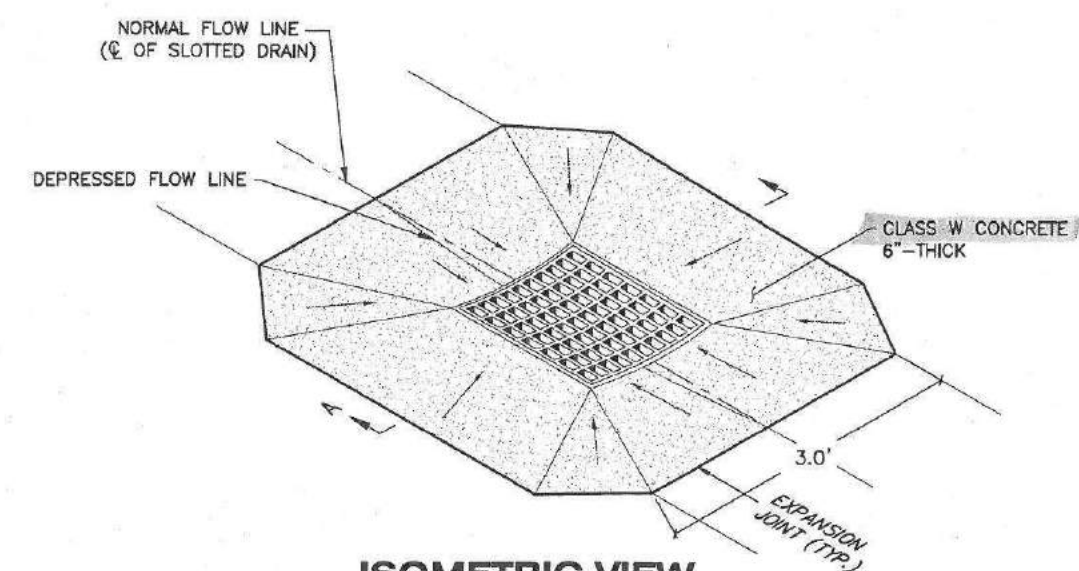
NO.	DATE	REVISION	STATE	PROJECT DESIGNATION	YEAR	SHEET NO.	TOTAL SHEETS
			ALASKA	SFHWY00005/0003195	2017	14	17



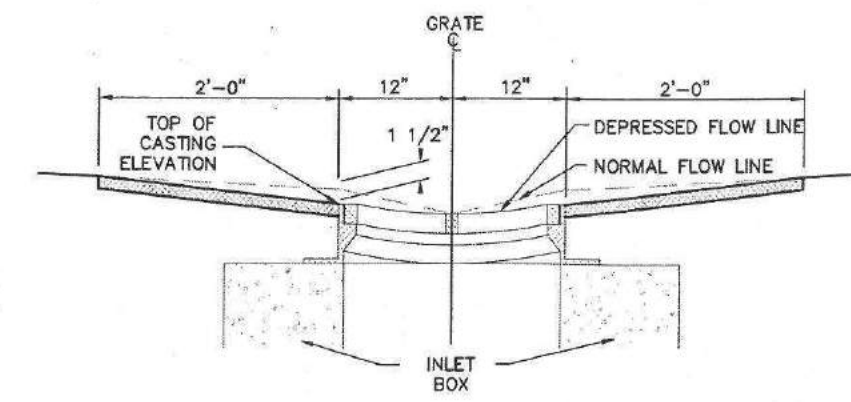
1 SPECIAL SIGN DETAIL
SPECIAL BORDER & LEGEND: GREEN
BACKGROUND: WHITE
FONT: TYPE 'B'



2 SPECIAL SIGN DETAIL
SPECIAL BORDER & LEGEND: GREEN
BACKGROUND: WHITE
FONT: TYPE 'B'

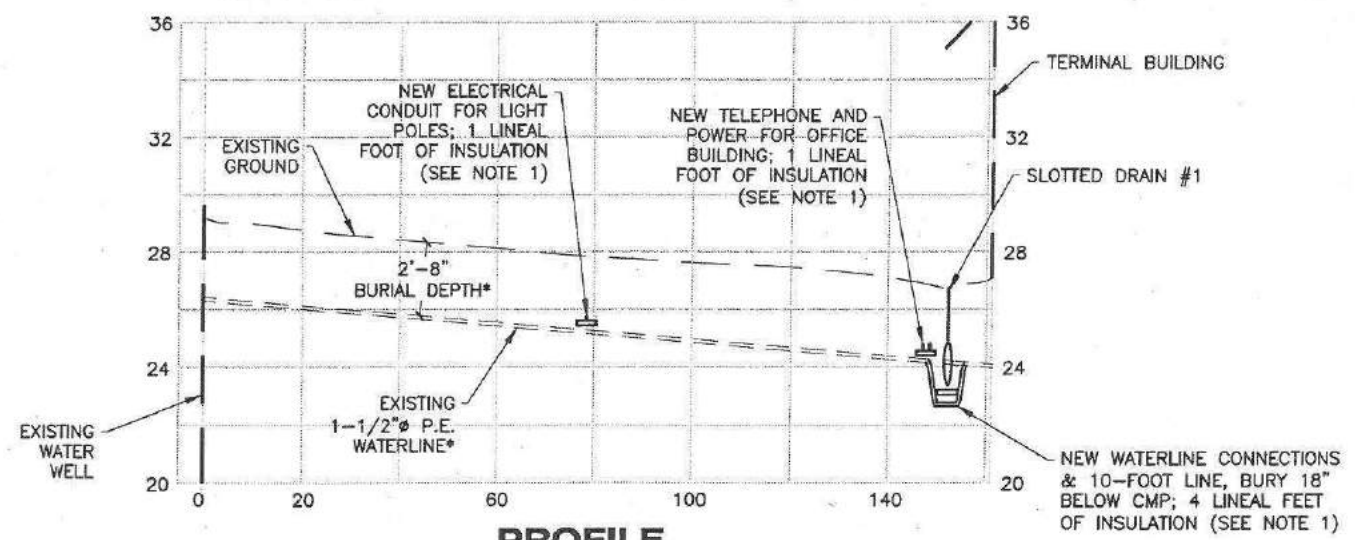


**ISOMETRIC VIEW
GUTTER INLET**

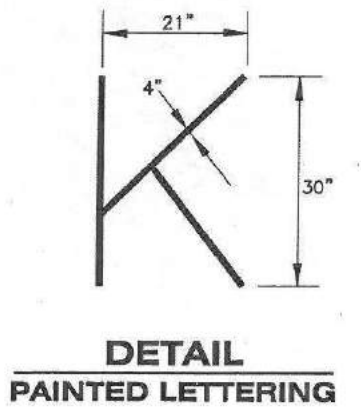


**A SECTION
GUTTER INLET**

615 SIGN SUMMARY							
SIGN #	POINT #	ASDS CODE	SIZE INCHES	AREA (S.F.)	# OF POSTS	DESCRIPTION	REMARKS
1	201	-	-	-	-	SCENIC BYWAY	SALVAGE & REUSE
2	202	-	-	-	-	HOLLIS 2 CRAIG 30 THORNE BAY 51	SALVAGE & REUSE
3	203	-	-	-	-	SPEED LIMIT 50	SALVAGE & REUSE
4	204	-	-	-	-	BUCKLE UP IT'S THE LAW	SALVAGE & REUSE
5	205	-	-	-	-	ENTER CLARK BAY SEAPLANE FLOAT	SALVAGE & REUSE
6	206	-	-	-	-	CRAIG KLAWOCK PARKING STAGING AREA	SALVAGE & REUSE
7	207	-	-	-	-	NO PARKING ANY TIME SNOW PLOW TURNAROUND	SALVAGE & REUSE
8	208	-	12 X 24	2	1	SPECIAL SIGN #1	
9	209	R6-1(L) R6-1(R)	12 X 36 12 X 36	3 3	1	ONE WAY	MOUNT TO SAME POST, OPP. SIDES
10	210	R5-1	30 X 30	6.25	1	DO NOT ENTER	
11	211	-	12 X 24	2	1	SPECIAL SIGN #1	
12	212	-	12 X 24	2	1	SPECIAL SIGN #1	
13	213	-	12 X 24	2	1	SPECIAL SIGN #2	
14	214	-	12 X 24	2	1	SPECIAL SIGN #2	
15	215	-	12 X 24	2	1	SPECIAL SIGN #2	
16	216	-	12 X 24	2	1	SPECIAL SIGN #2	
17	217	R7-8RL	12 X 18	0.8	1	RESERVED PARKING	
18	218	R7-8RL	12 X 18	0.8	1	RESERVED PARKING	
19	219	R5-1	30 X 30	6.25	1	DO NOT ENTER	
20	220	R6-1(L) R6-1(R)	12 X 36 12 X 36	3 3	1	ONE WAY	MOUNT TO SAME POST, OPP. SIDES
21	221	R7-8RL	12 X 18	0.8	1	RESERVED PARKING	
22	222	R7-8RL R7-8A	12 X 18 12 X 6	0.8 0.5	1	RESERVED PARKING VAN ACCESSIBLE	MOUNT TO SAME POST
23	223	R7-8RL	12 X 18	0.8	1	RESERVED PARKING	
				43.2	16		

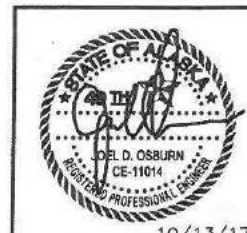


**PROFILE
WATER SERVICE MODIFICATIONS**
* FROM 1986 PROJECT X70044 PLANS; ONLY INFORMATION AVAILABLE



**DETAIL
PAINTED LETTERING**

- NOTES:**
1. PROVIDE 2'-WIDE, 4"-THICK RIGID FOAM INSULATION W/ STAGGERED SEAMS BETWEEN PIPE CROSSINGS.
 2. THE CONTRACTOR SHALL PROVIDE SURVEY LOCATION OF WATER SERVICE MODIFICATIONS.
 3. REFER TO STD. DWG. D-24.00 FOR MORE INLET FRAME & GRATE DETAILS.



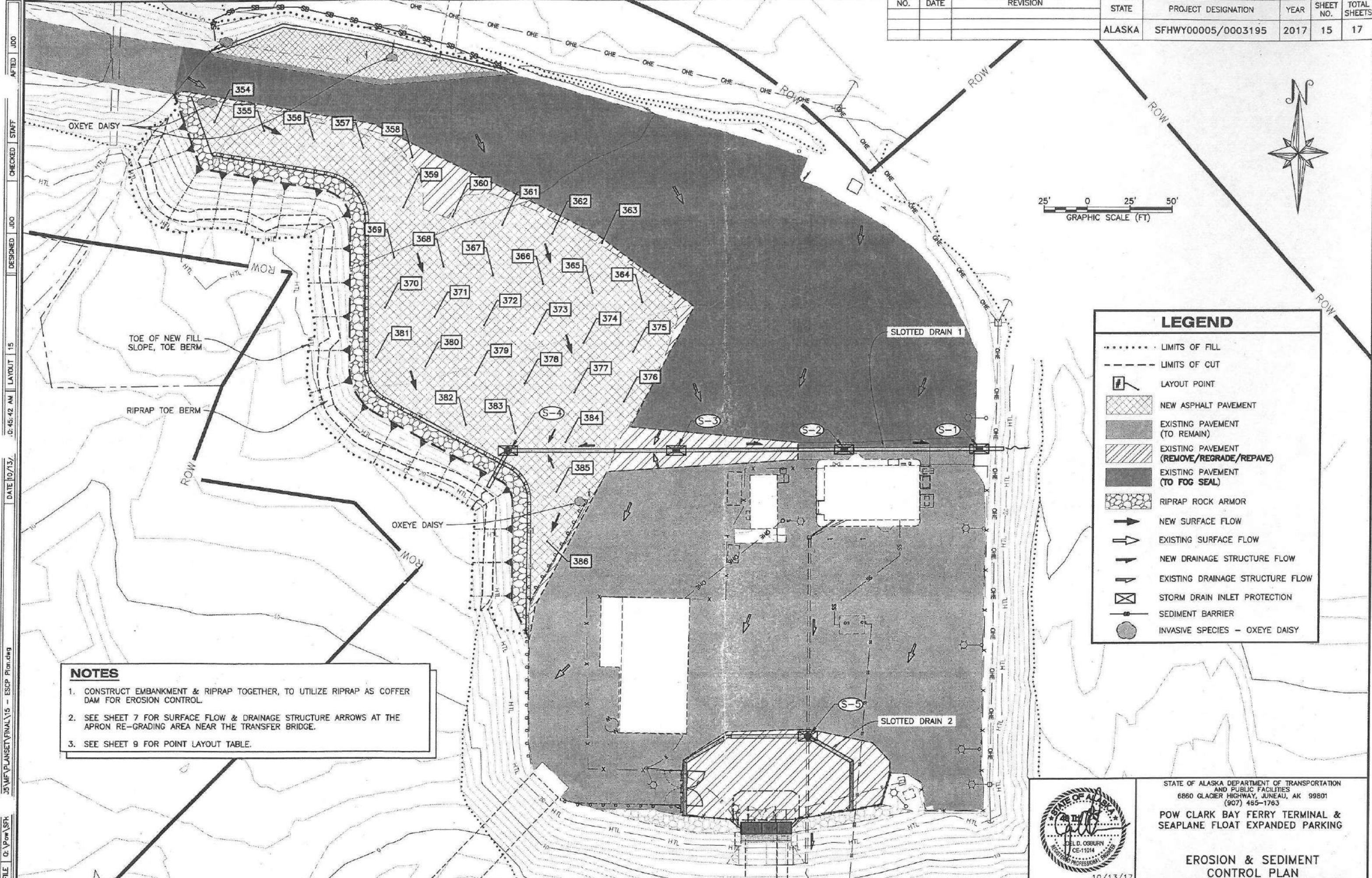
STATE OF ALASKA DEPARTMENT OF TRANSPORTATION AND PUBLIC FACILITIES
6860 GLACIER HIGHWAY, JUNEAU, AK 99801
(907) 465-1763
POW CLARK BAY FERRY TERMINAL & SEAPLANE FLOAT EXPANDED PARKING

**SPECIAL SIGNS &
MISC. DETAILS**

10/13/17

FILE C:\Pow\SFH\00005\MF\PLANSET\FINAL\13-14 - S&S Plan.dwg
 DATE 10/13/2017 10:41:42 AM LAYOUT 14
 DESIGNED JDO CHECKED STAFF DRAFTED JDO

NO.	DATE	REVISION	STATE	PROJECT DESIGNATION	YEAR	SHEET NO.	TOTAL SHEETS
			ALASKA	SFHWY00005/0003195	2017	15	17



LEGEND

- LIMITS OF FILL
- LIMITS OF CUT
- [#] LAYOUT POINT
- [Cross-hatch] NEW ASPHALT PAVEMENT
- [Solid grey] EXISTING PAVEMENT (TO REMAIN)
- [Diagonal lines] EXISTING PAVEMENT (REMOVE/REGRADE/REPAVE)
- [Dark grey] EXISTING PAVEMENT (TO FOG SEAL)
- [Stippled] RIPRAP ROCK ARMOR
- [Arrow] NEW SURFACE FLOW
- [Open arrow] EXISTING SURFACE FLOW
- [Arrow with bar] NEW DRAINAGE STRUCTURE FLOW
- [Open arrow with bar] EXISTING DRAINAGE STRUCTURE FLOW
- [Square with X] STORM DRAIN INLET PROTECTION
- [Circle with bar] SEDIMENT BARRIER
- [Circle] INVASIVE SPECIES - OXEYE DAISY

NOTES

1. CONSTRUCT EMBANKMENT & RIPRAP TOGETHER, TO UTILIZE RIPRAP AS COFFER DAM FOR EROSION CONTROL.
2. SEE SHEET 7 FOR SURFACE FLOW & DRAINAGE STRUCTURE ARROWS AT THE APRON RE-GRADING AREA NEAR THE TRANSFER BRIDGE.
3. SEE SHEET 9 FOR POINT LAYOUT TABLE.

FILE: Q:\Pow\SFH\35 MF\PLANSET\FINAL\15 - ESCP Plan.dwg
 DATE: 10/13/17
 TIME: 0:45:42 AM
 LAYOUT: 15
 DESIGNED: JDO
 CHECKED: STAFF
 AFTED: JDO



STATE OF ALASKA DEPARTMENT OF TRANSPORTATION AND PUBLIC FACILITIES
 6860 GLACIER HIGHWAY, JUNEAU, AK 99801
 (907) 465-1763

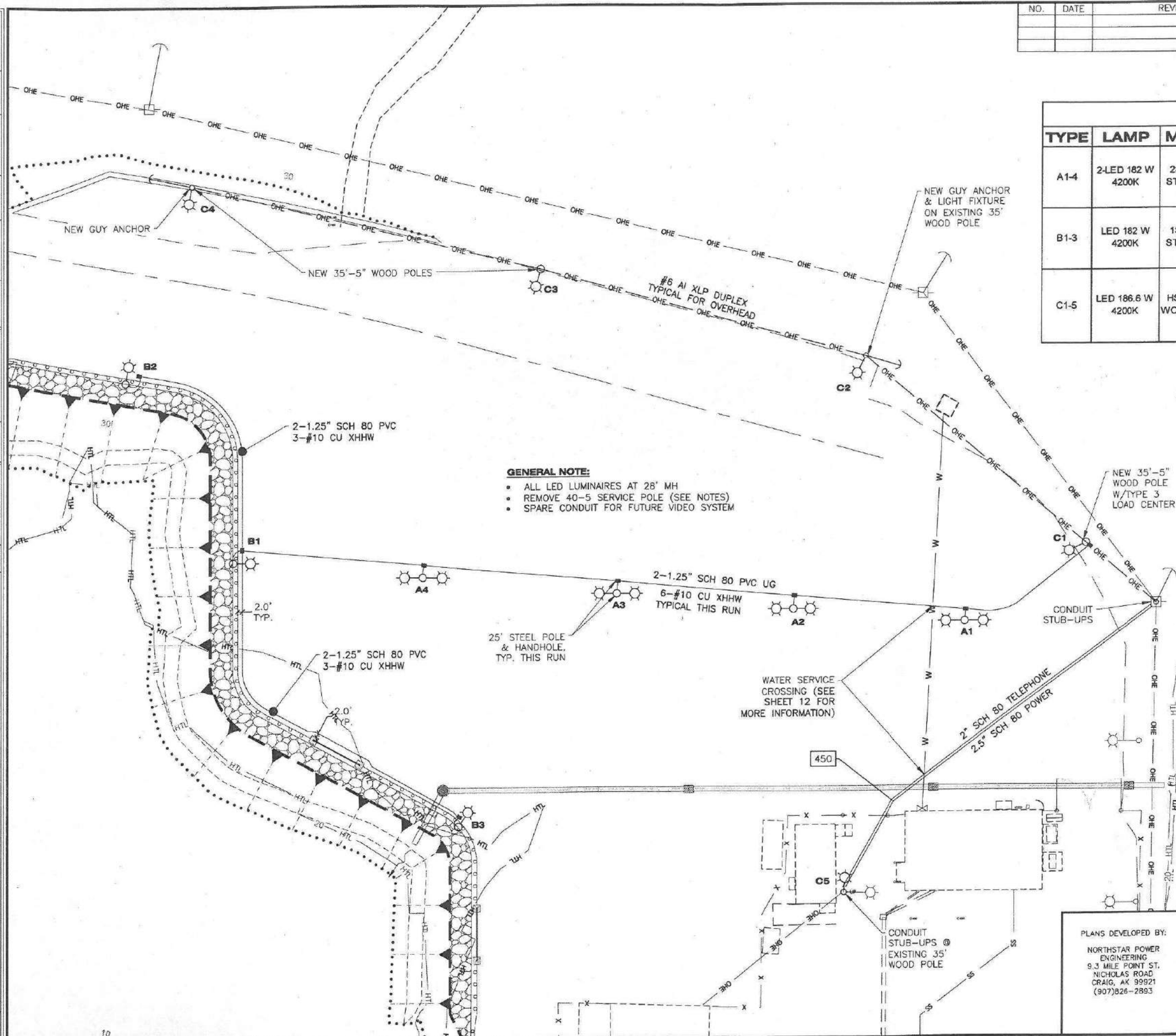
POW CLARK BAY FERRY TERMINAL & SEAPLANE FLOAT EXPANDED PARKING

EROSION & SEDIMENT CONTROL PLAN

10/13/17

NO.	DATE	REVISION	STATE	PROJECT DESIGNATION	YEAR	SHEET NO.	TOTAL SHEETS
			ALASKA	SFWHY00005/0003195	2017	16	17

FILE: Q:\Pow\SFWHY00005\VF\PLANS\SET\FINAL\16 - UPLANDS LIGHTING PLAN.dwg
 DATE: 10/10/2017 13:39 LAYOUT: 16
 DESIGNED: FMC
 CHECKED: STAFF
 DRAFTED: FMC



GENERAL NOTE:

- ALL LED LUMINAIRES AT 28' MH
- REMOVE 40-5 SERVICE POLE (SEE NOTES)
- SPARE CONDUIT FOR FUTURE VIDEO SYSTEM

NOTES:

1. UTILITY POWER AND TELEPHONE SERVICE MODIFICATIONS SHALL BE COORDINATED WITH ALASKA POWER AND TELEPHONE AND SHALL COMPLY WITH THEIR REQUIREMENTS. CONTACT GREG MICKELSON AT 907-826-3202, EXT. 321.
2. THE CONTRACTOR SHALL DIG THE UTILITY TRENCH BETWEEN THE AP&T TRANSFORMER POLE AND THE IFA OFFICE BUILDING IN THE LOCATION SHOWN ON THE ELECTRICAL PLAN AND IN ACCORDANCE WITH THE TRENCH CROSS-SECTION SHOWN ON THE ELECTRICAL DETAILS.
3. THE CONTRACTOR SHALL INSTALL THE SPECIFIED POWER (2.5" SCH 80 PVC) AND TELEPHONE (2" SCH 80 PVC) CONDUITS IN ACCORDANCE V. THE TRENCH CROSS-SECTION DETAIL AND AP&T UNDERGROUND SERVICE SPECIFICATIONS. USE 36" SWEEPS AND STUB UP THE CONDUITS APPROXIMATELY 9" FROM THE POLES.
4. AP&T AND THE DOT SHALL BE NOTIFIED FOR A TRENCH INSPECTION AND AFTER APPROVAL THE TRENCH SHALL BE IMMEDIATELY BACKFILLED SO THAT IFA FERRY TERMINAL TRAFFIC WILL NOT BE IMPEDED. AP&T WILL INSTALL THE CONDUCTORS AND MAKE THE SERVICE MODIFICATIONS ON THE TWO TERMINAL POLES.
5. AP&T WILL FURNISH AND INSTALL THE THREE 35'-5 WOOD LIGHT POLES (C1, C3 & C4) ON THE PERIPHERY OF THE UPLANDS PARKING AREA AND REMOVE THE EXISTING 40-5 WOOD POLE THAT OBSTRUCTS THE TERMINAL ENTRANCE. C2 IS AN EXISTING WOOD POLE AND WILL REMAIN. AP&T WILL FURNISH AND INSTALL A GUY AND ANCHOR AT POLES C2 AND C5.
6. THE CONTRACTOR WILL FURNISH ALL LIGHT FIXTURES. AP&T WILL INSTALL NEW LIGHT FIXTURES ON POLES C1-C5.
7. AP&T WILL FURNISH AND INSTALL THE OVERHEAD LIGHT CABLE BETWEEN C2 & C4. AN OVERHEAD CABLE BETWEEN THE TRANSFORMER POLE AND C2 WILL REMAIN.
8. AP&T WILL PROVIDE AN OVERHEAD 100A SERVICE TO THE AREA LIGHT LOAD CENTER. THE CONTRACTOR SHALL INSTALL THE LOAD CENTER ON STANDOFF BRACKETS AND GROUND IN ACCORDANCE WITH THE DETAIL ON SHEET 17 AND AP&T SERVICE DROP SPECIFICATIONS. AP&T WILL INSTALL THE SERVICE DROP FROM THE TRANSFORMER POLE.
9. ALL ELECTRICAL WORK SHALL COMPLY WITH THE NATIONAL ELECTRICAL CODE AND THE NATIONAL ELECTRICAL SAFETY CODE WHERE APPLICABLE.

LUMINAIRE SCHEDULE				
TYPE	LAMP	MOUNTING	DESCRIPTION	MANUFACTURER
A1-4	2-LED 182 W 4200K	2SB SIDE MTG. 25' STEEL POLE 28' MH	LED TYPE III ARX16 ARCHETYPE 600 Ma DRIVE, 182 W, 4200K, 120V, DARK BRONZE, SINGLE FUSE, 5" SOFT SQUARE POLE	KIM-HUBBELL LTG. 2SB-ARX16-3 4K-60-UV-DB-ST-SF
B1-3	LED 182 W 4200K	1SA SIDE MTG. 28' STEEL POLE 28' MH	LED TYPE III ARX16 ARCHETYPE 600 Ma DRIVE, 182 W, 4200K, 120V, DARK BRONZE, SINGLE FUSE, 5" SOFT SQUARE POLE	KIM-HUBBELL LTG. 1SA-ARX16-3 4K-60-UV-DB-ST-SF
C1-5	LED 186.6 W 4200K	HSF POLE MTG. 35' WOOD POLE 28.5' MH	LED TYPE III CREE STR-LWY 525 Ma DRIVE, 30 LED, 53 W, 4200K, 120V, DARK BRONZE, SINGLE FUSE, PHOTOCCELL, 3 FT ARM, 2" PIPE TENON	CREE LTG. STR-LWY-3M-HT-03- E-UL-SV-525-40K-R-2"SF GARMIRE GCW-3-HDG

PLANS DEVELOPED BY:
 NORTHSTAR POWER
 ENGINEERING
 9.3 MILE POINT ST.
 NICHOLAS ROAD
 CRAIG, AK 99921
 (907)826-2893



STATE OF ALASKA DEPARTMENT OF TRANSPORTATION AND PUBLIC FACILITIES

POW CLARK BAY FERRY TERMINAL & SEAPLANE FLOAT EXPANDED PARKING

UPLANDS LIGHTING PLAN

10/10/17

